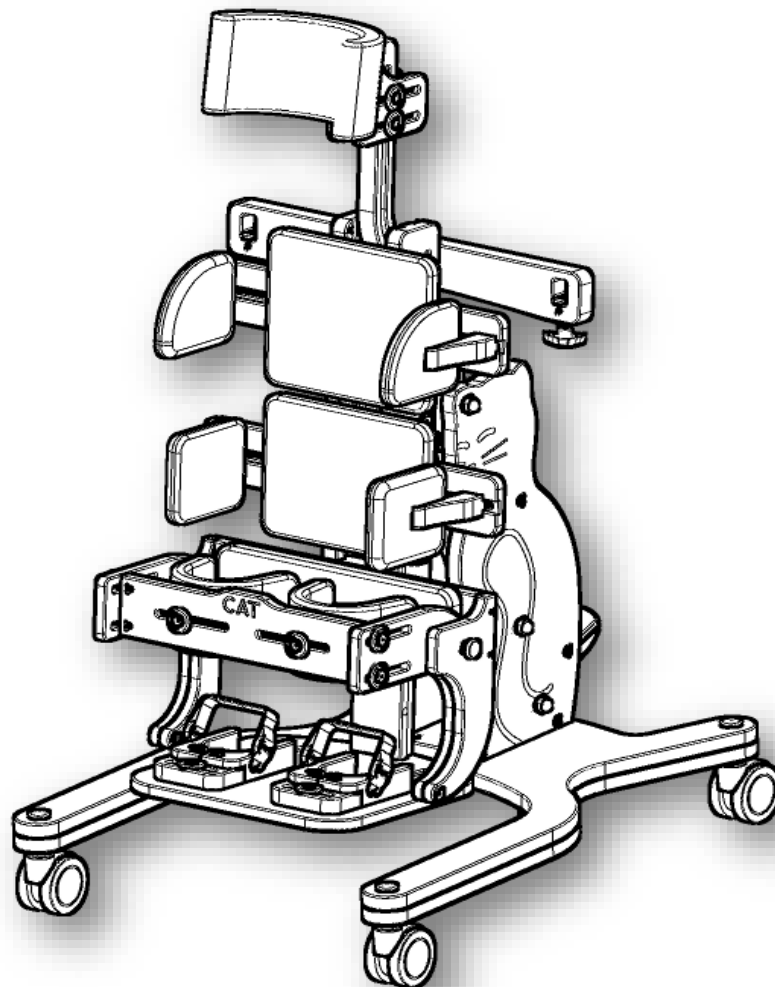


STANDER

CAT 2TM



CE

ASSEMBLY MANUAL

AKCES[®]MED



CAUTION! Manufacturer takes responsibility for proper usage of the device only when the product was purchased from qualified Akces-Med employee or at specialized medical store.

Medical product first class according to the Regulation 93/42/EWG of European Parliament and Council regarding medical products.

For this product the producer issued relevant declaration of conformity.

Producer's identification number in the Registration Department of Healing Products, Medical Products and Biocide Products:

PL/CA01 04088/W

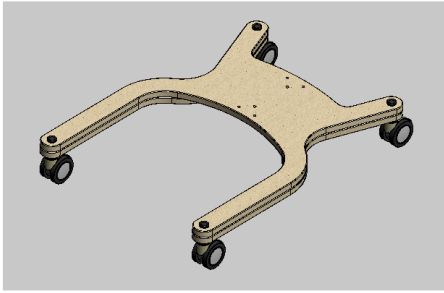


Akces-Med Sp. z o.o. Company introduced quality management system

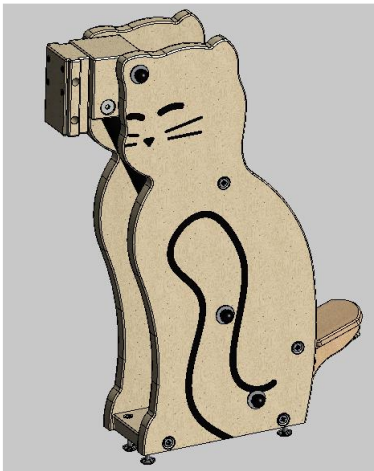
ISO 13485 regarding production, sales and service.

The system is certified by Det Norske Veritas..

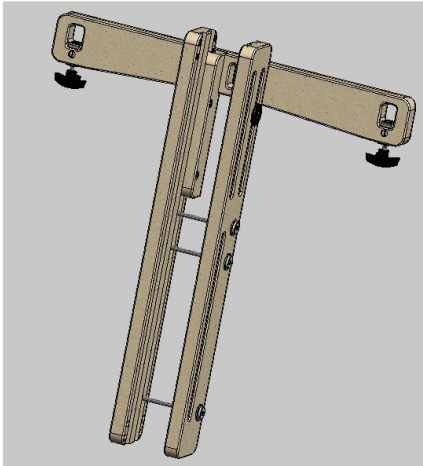
a) frame with castors



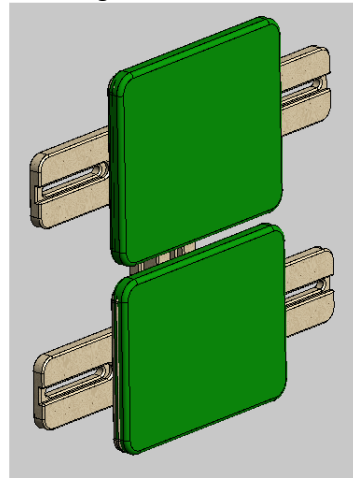
b) cat's body



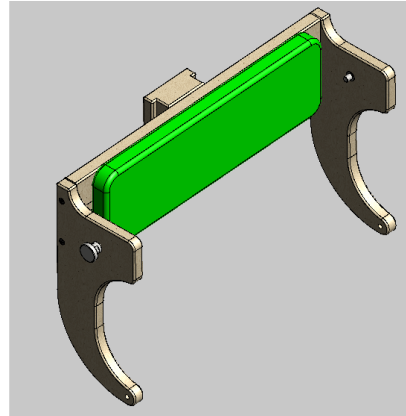
c) frame



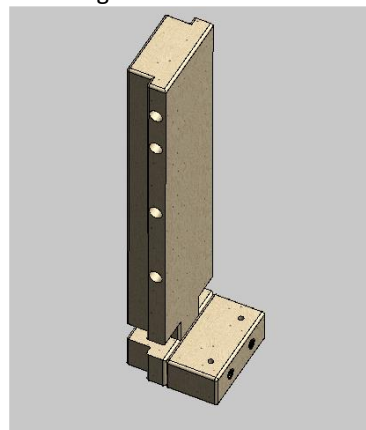
d) fastening for cushions



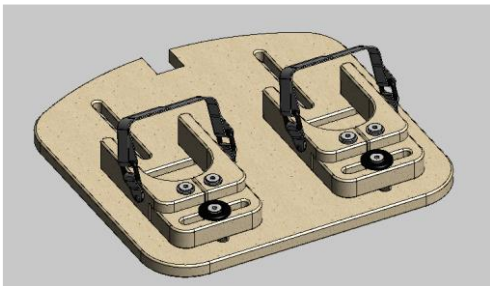
e) fastening for knee pelottes



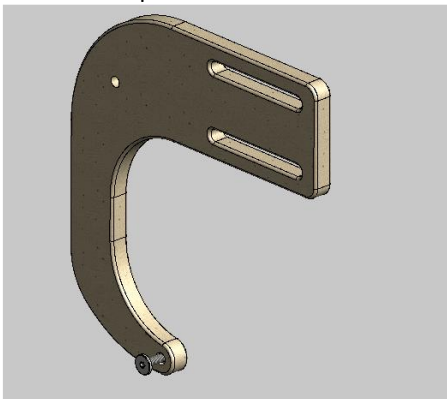
f) fastening for footrest



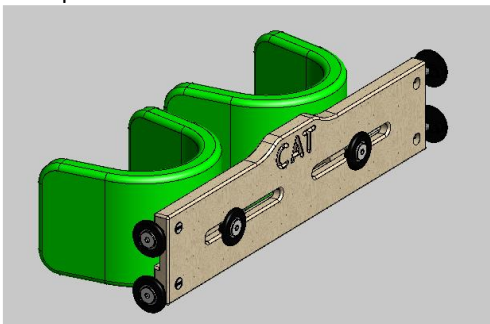
g) footrest



h) side of knee pelottes



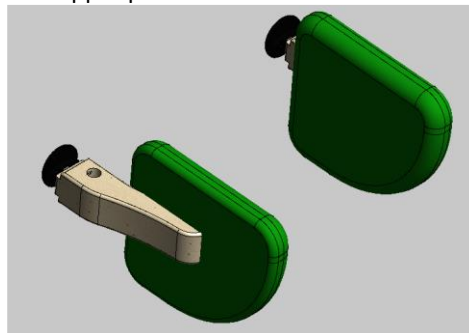
i) knee pelottes



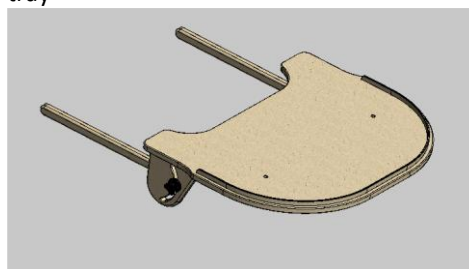
j) side lower pelottes



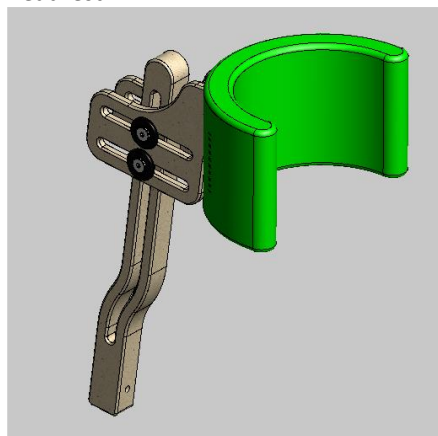
k) side upper pelottes



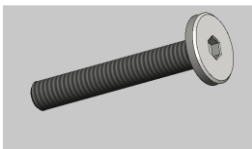
l) tray



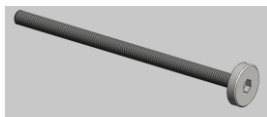
m) headrest



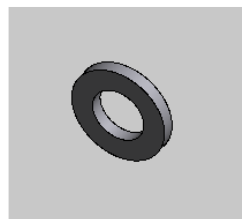
n) machine screw M6x40



s) head screw M8x110



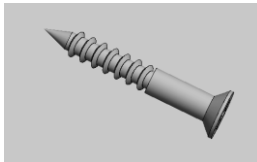
w) steel washer



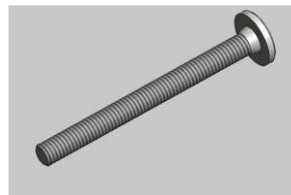
o) washer



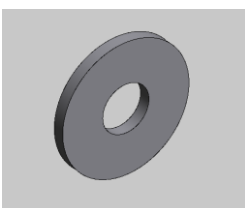
t) screw for wood



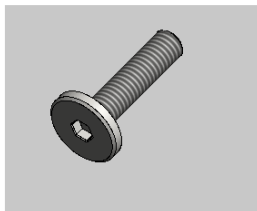
x) machine screw M6x65



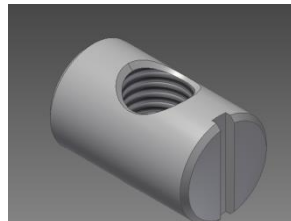
p) steel washer 6



u) machine screw M6x25



y) barrel nut



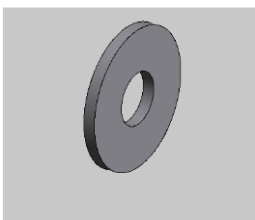
q) head screw M6x45



v) sleeve nut

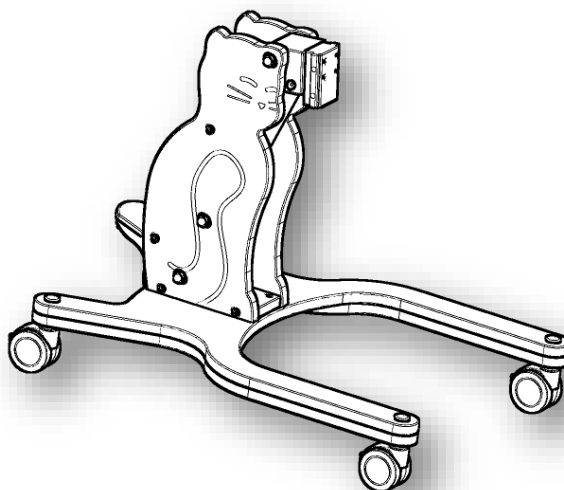
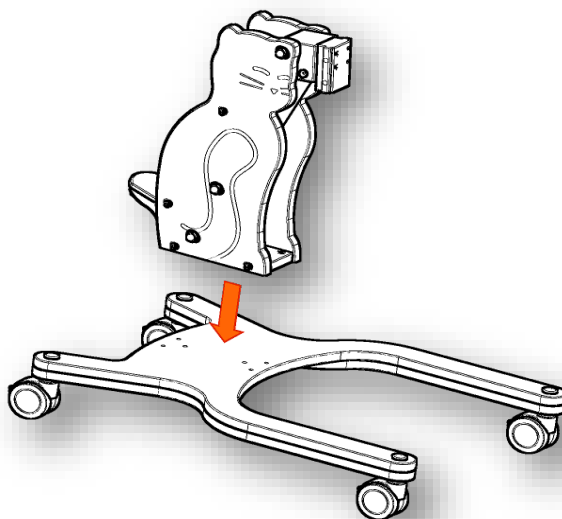


r) steel washer 8

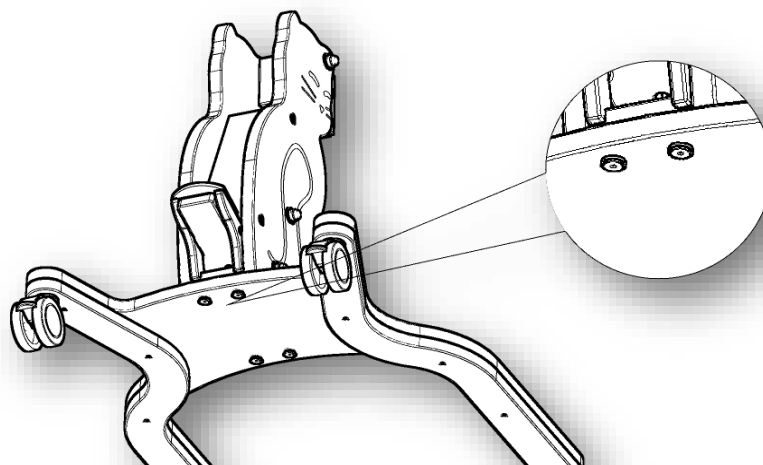
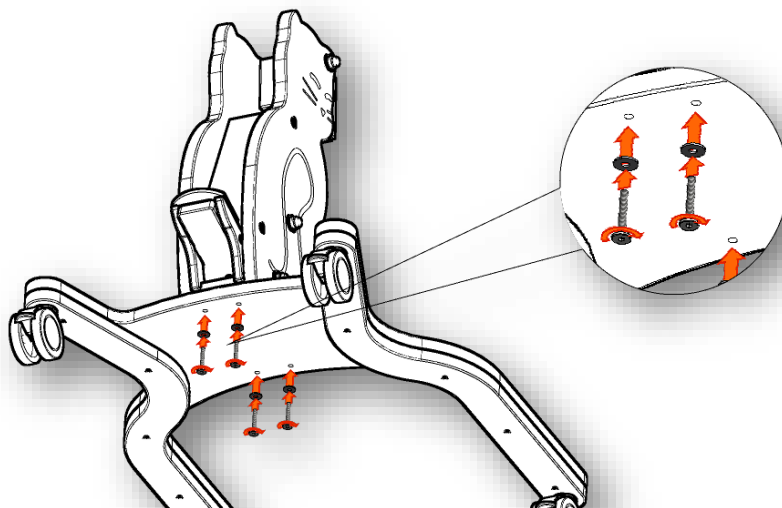


Stage I - How to assemble cat's body on frame with castors

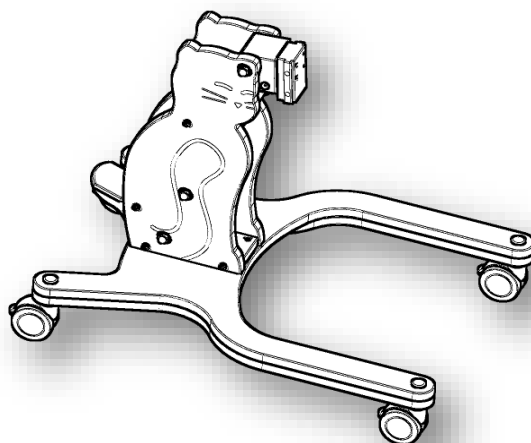
1. Picture below shows how frame with castors (a) and cat's body (b) should be mounted.



2. Screw four screws M6x40 (n) together with washers (p) under frame with castors (a).

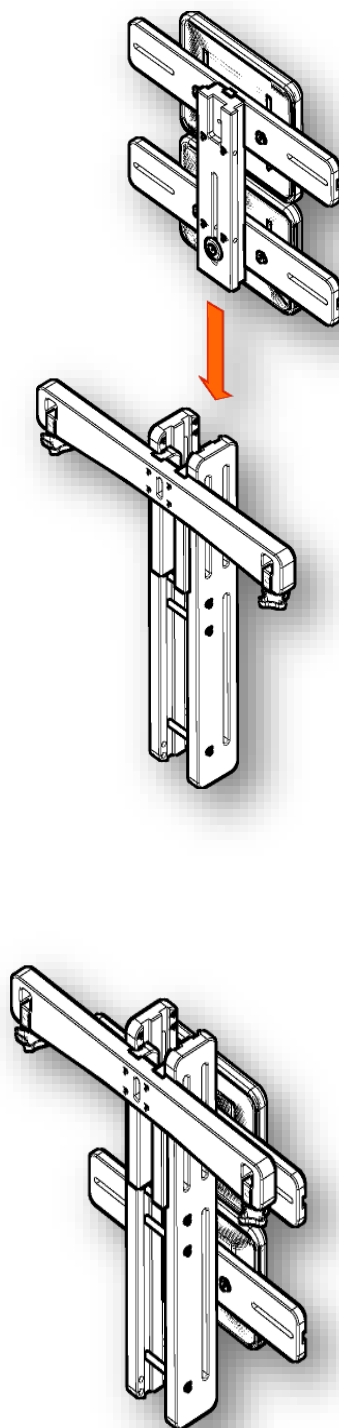


3. Picture below shows how cat's body (b) and castors (a) should be mounted.

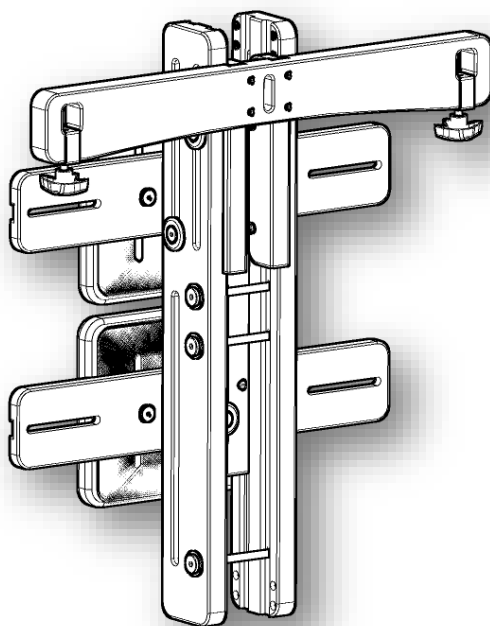
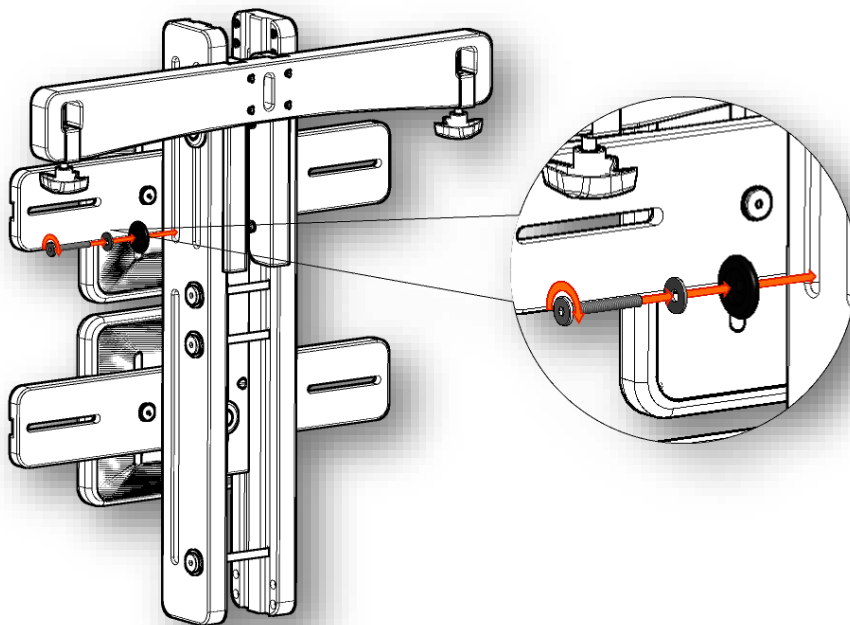


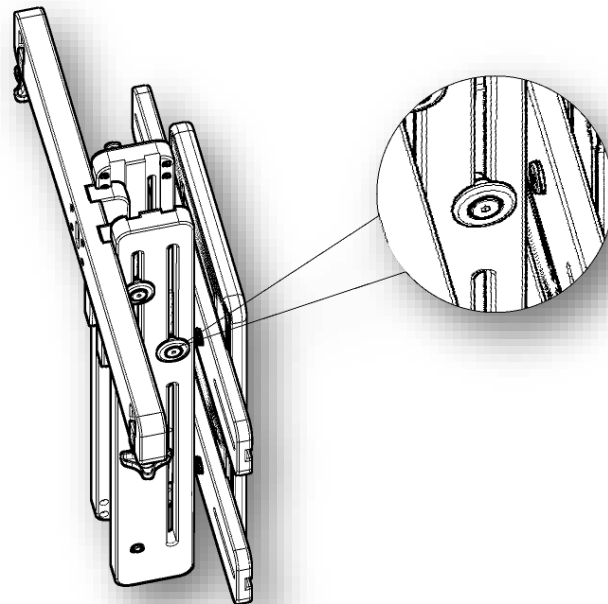
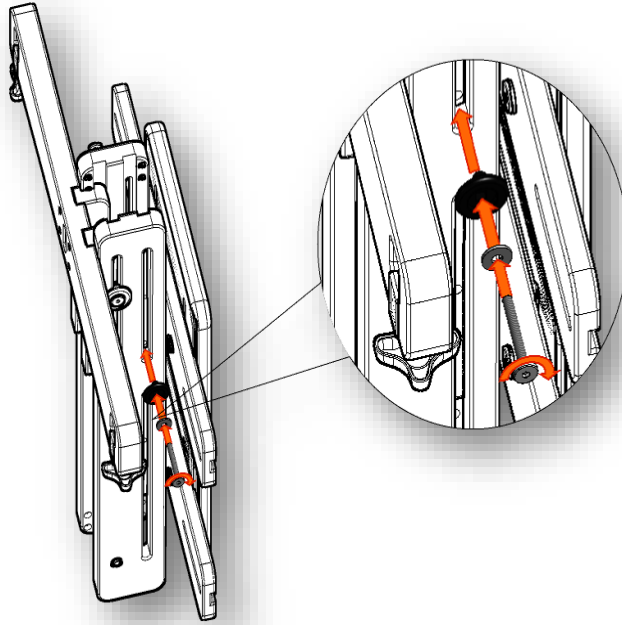
Stage II - How to assemble 'skeleton' of Cat

1. Picture below shows how fastening for cushions (d) should be mounted on frame (c).

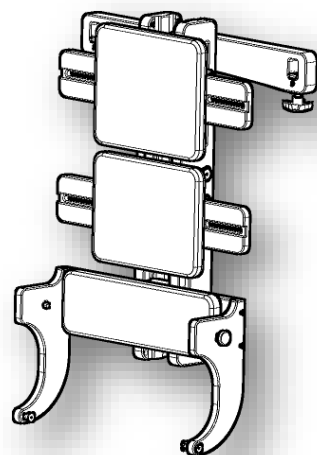
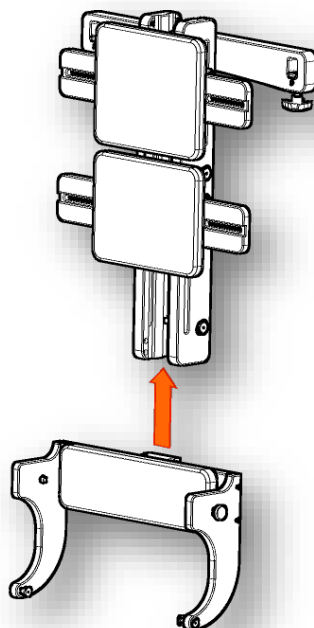


2. Fastening for cushions is screwed with the aid of screw (q), washer (p) and washer (o) on left as well as right side of frame (c).

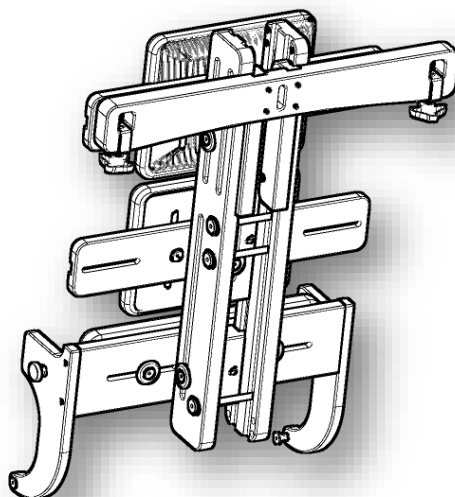
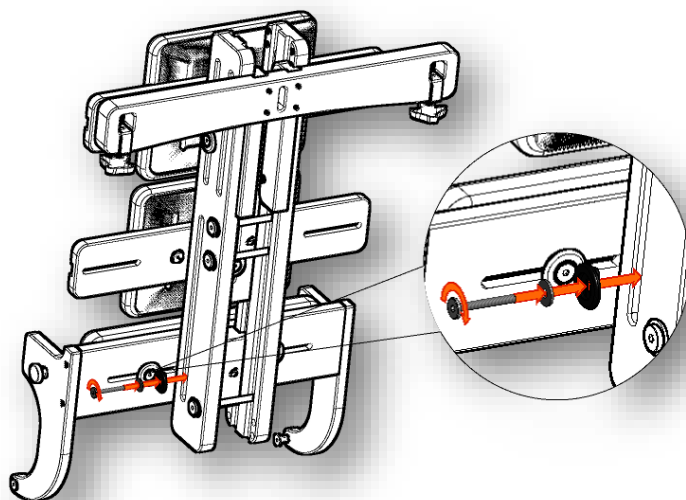


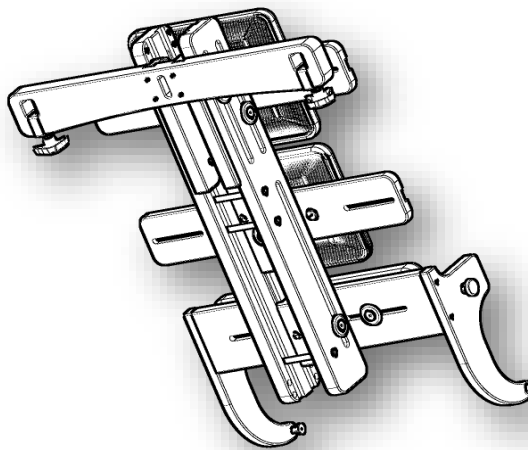
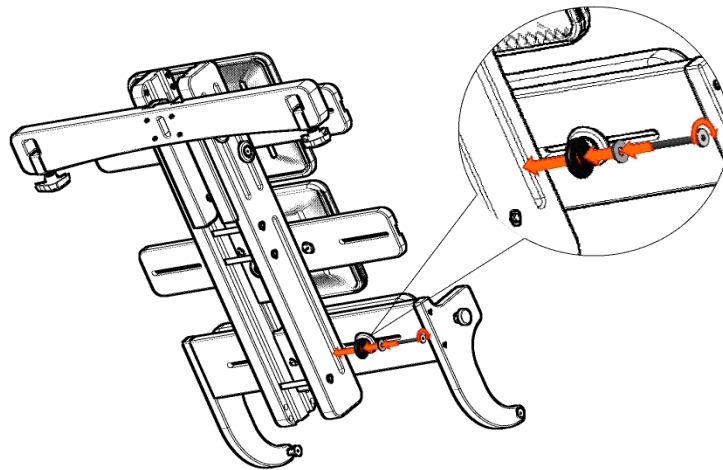


3. Picture below shows how knee pelottes (e) should be adjusted.

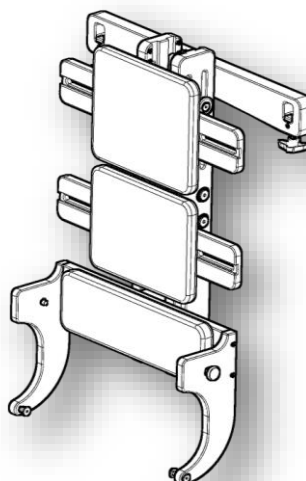


4. Screw fastenings for knee pelotte (e) with the aid of screw (q), washer (p) and washer (o) on both sides like it is presented in the picture below.



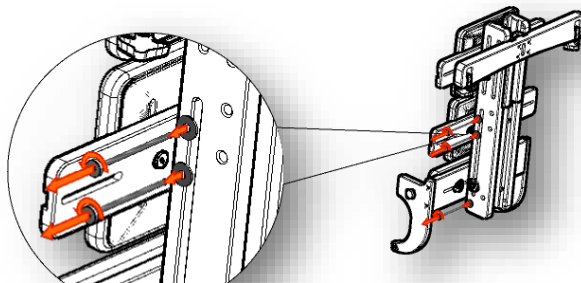


5. Picture below shows how 'skeleton' of Cat should be mounted.

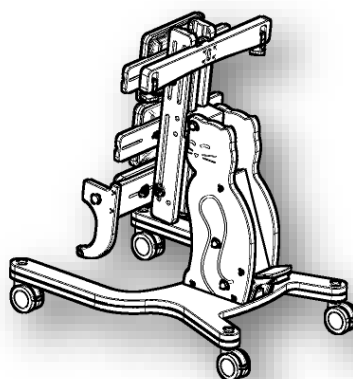
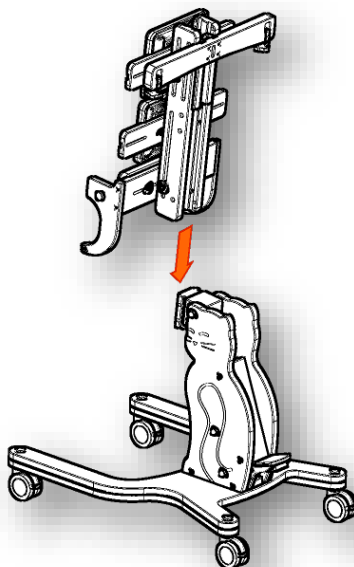


Stage III - How skeleton of Cat should be mounted on cat's body

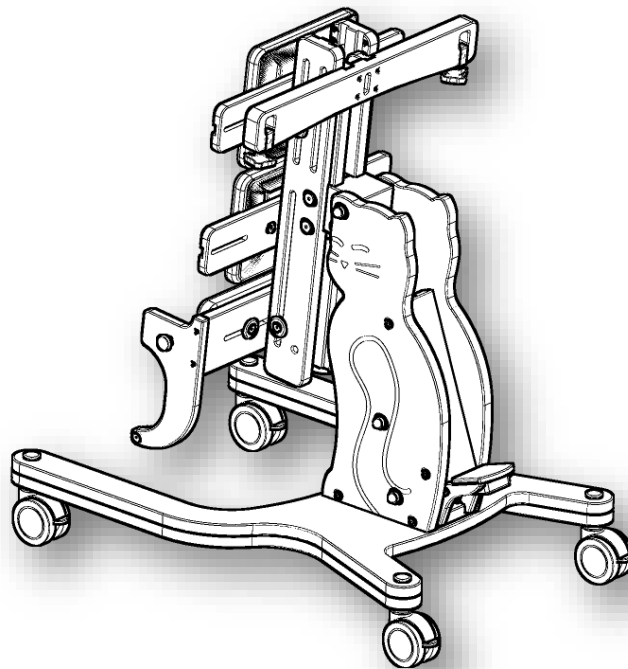
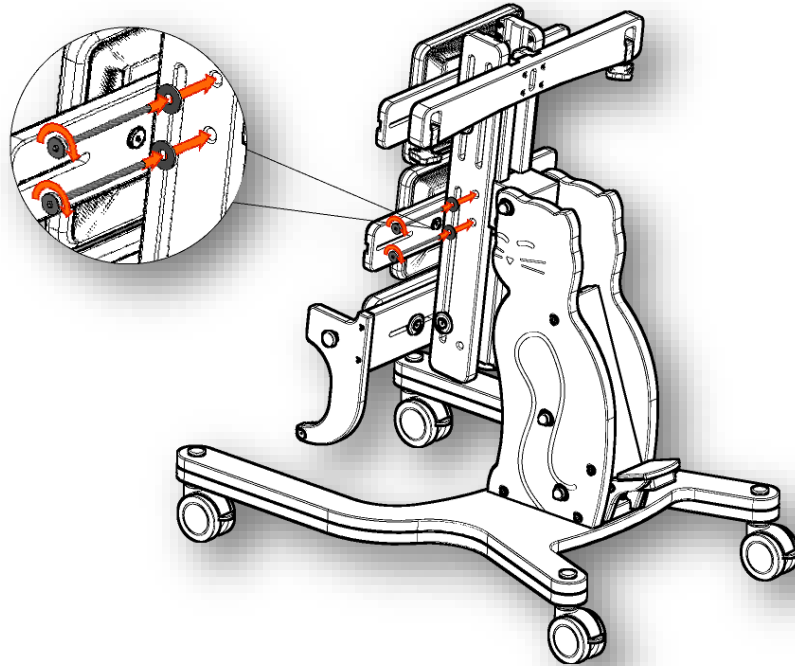
1. Unscrew 3 screws (s) together with washers (r) from skeleton of Cat.



2. Picture below shows how elements should be adjusted.

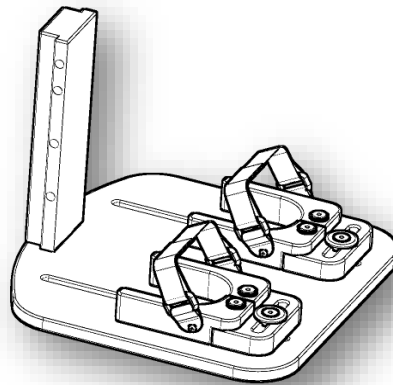
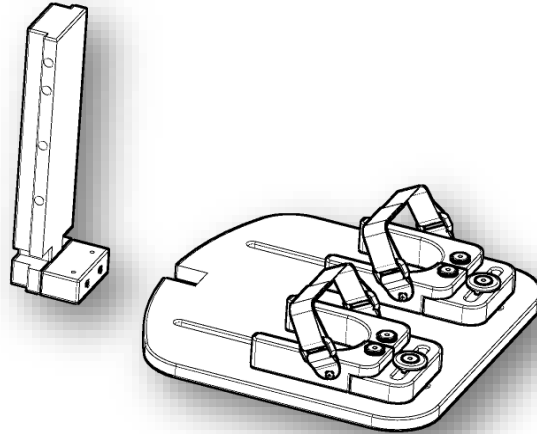


3. Screw 2 screws (s) together with washers (r) like it is presented in the picture below.

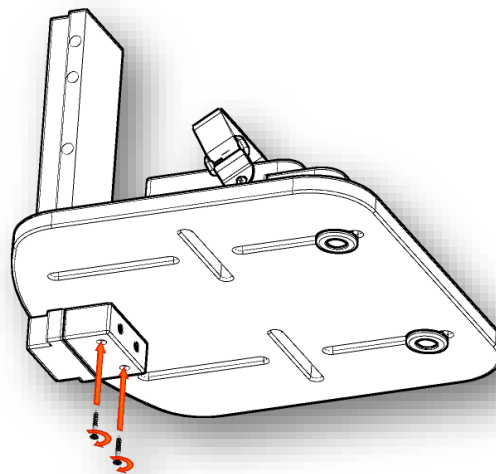


Stage IV - How to screw and assemble footrest for Cat

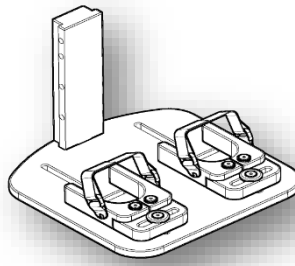
1. Fastenings for footrest (f) and footrest (g) should be adjusted as it is presented in the picture below.



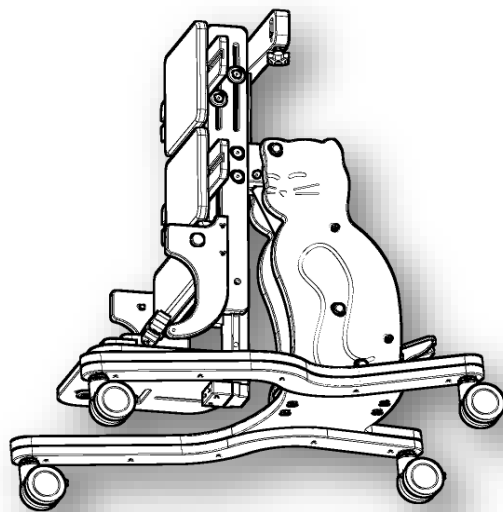
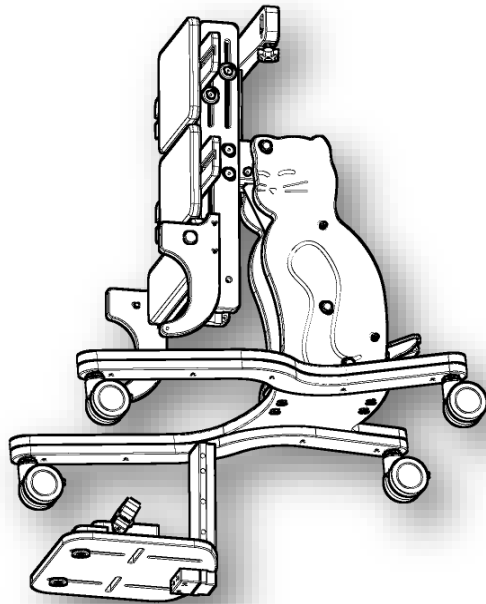
2. Use two screws (t) so as to tighten footrest from the bottom.



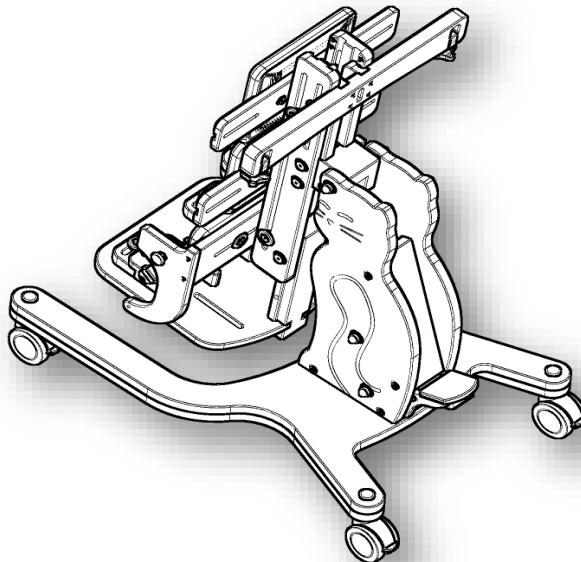
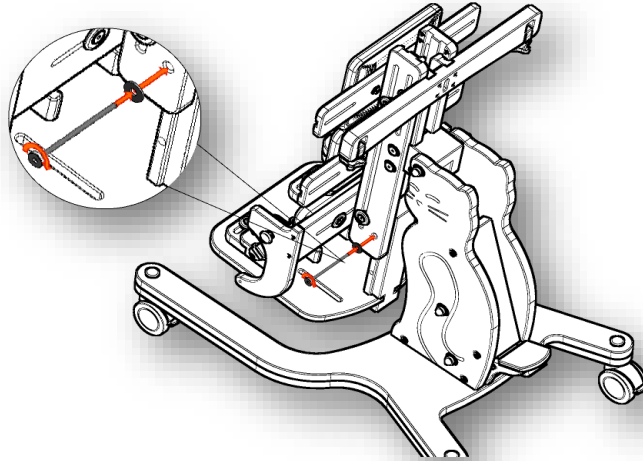
3. Picture below shows how footrest should be assembled.



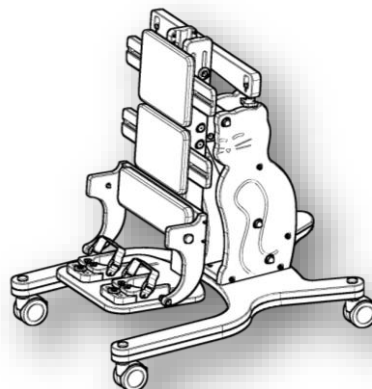
4. Put footrest under Cat as it is presented in the picture below.



5. Screw footrest to Cat with the aid of screws (s) together with washers (r) that were unscrewed in 3rd stage (point 1)

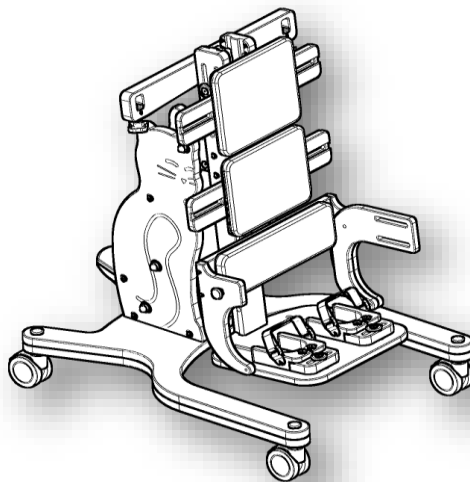
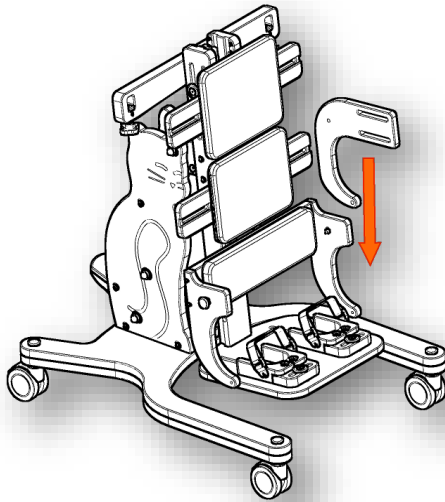


6. Picture below shows how footrest should be screwed.

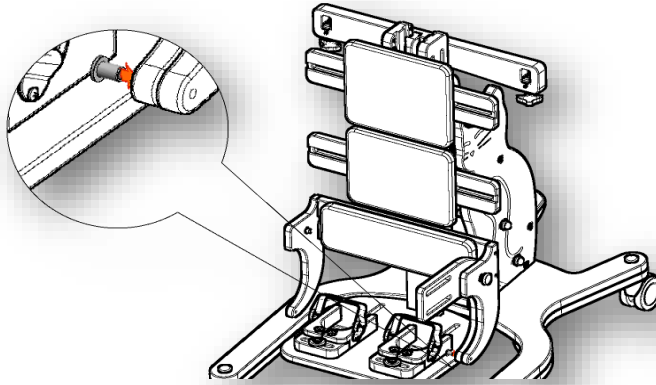


Stage V - Assembly of knee pelottes

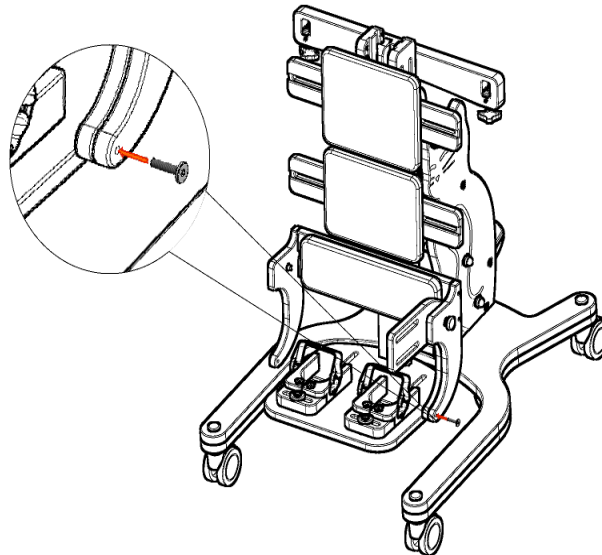
1. Picture below shows how left side of knee pelotte (h) should be adjusted.



2. Insert sleeve nut (v) into left side of knee pelotte like it is presented in the picture below.

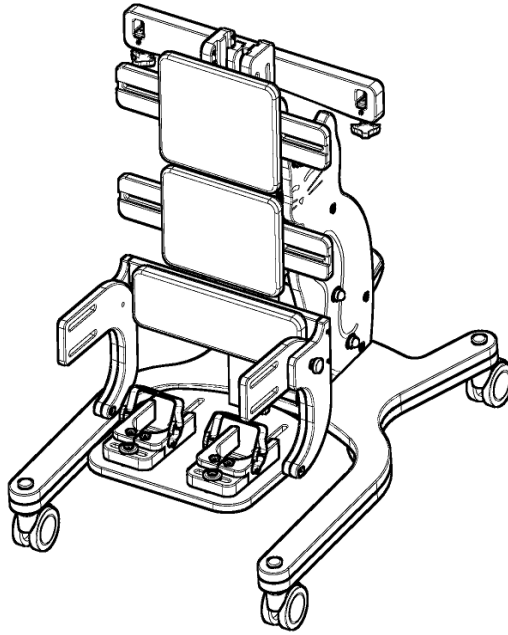


3. Screw knee pelotte with the aid of head screw (u) that is screwed into sleeve nut (remember to block nut while tightening screw)

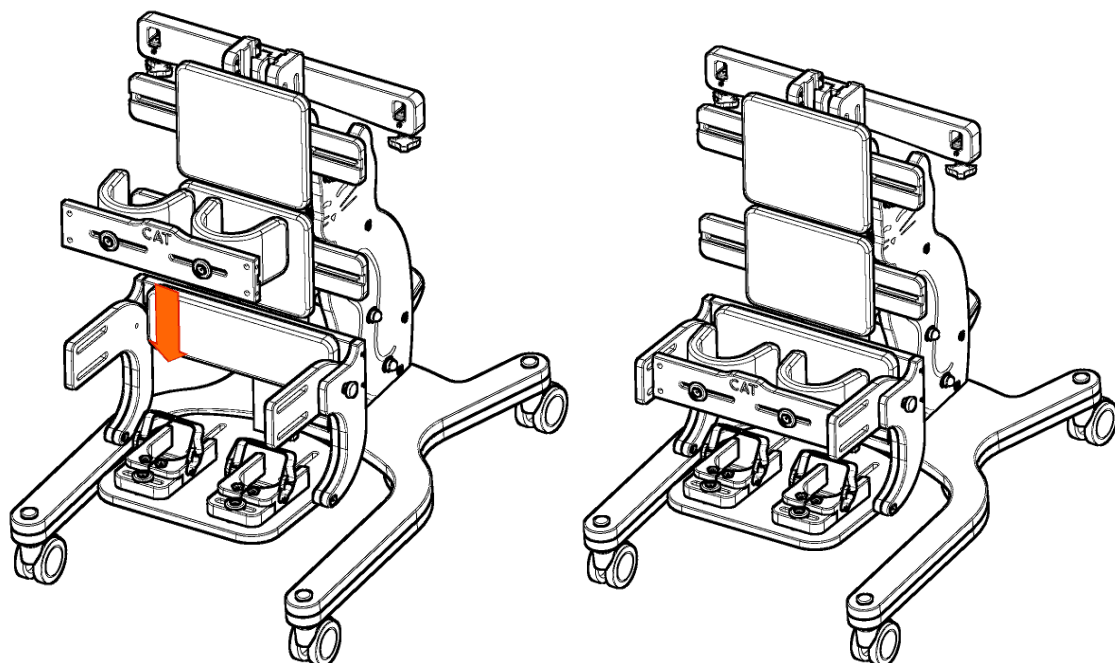


Points 1,2,3 should be repeated for right side.

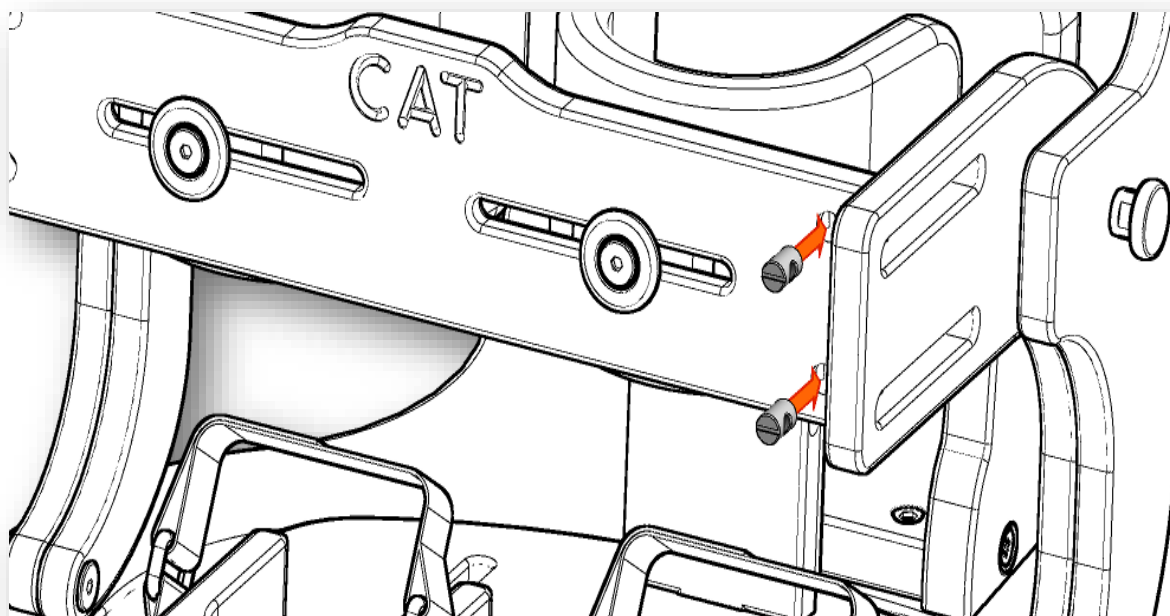
4. Picture below shows how both sides of knee pelottes should be mounted.

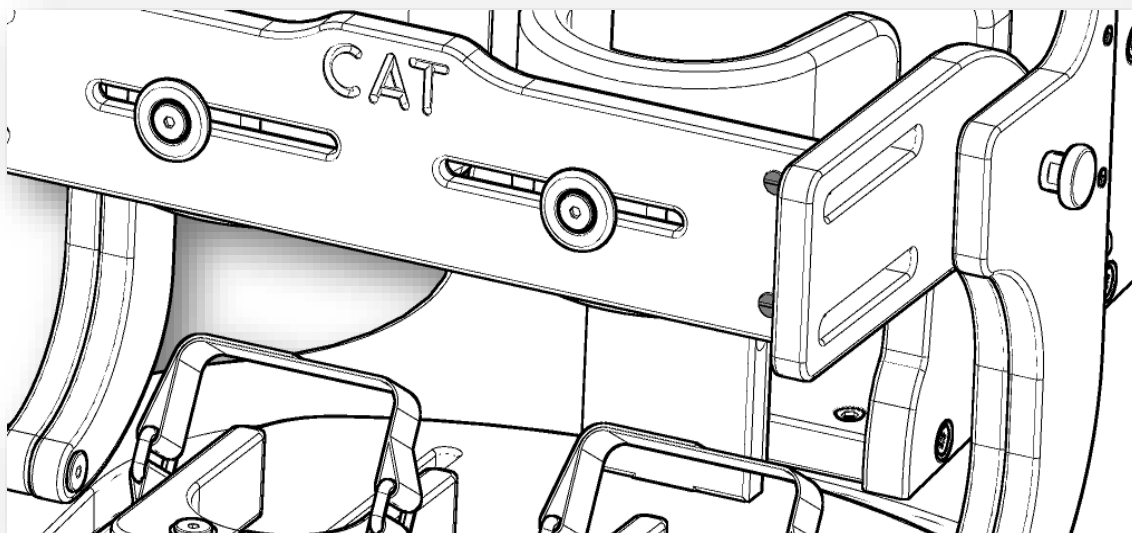


5. Adjust pelotte like it is presented in the picture below.



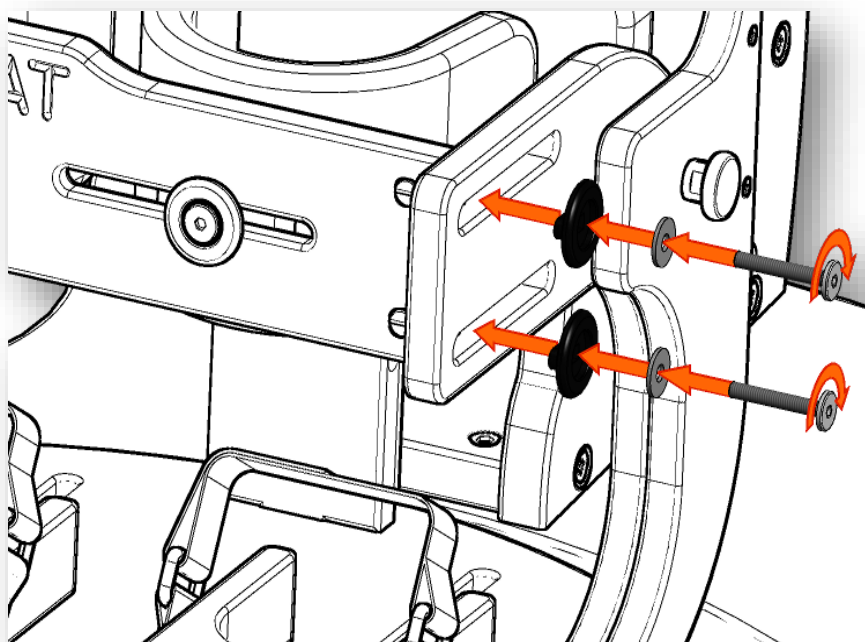
6. Insert two barrel nuts (y) into holes fi-10 in the left side of pelotte.

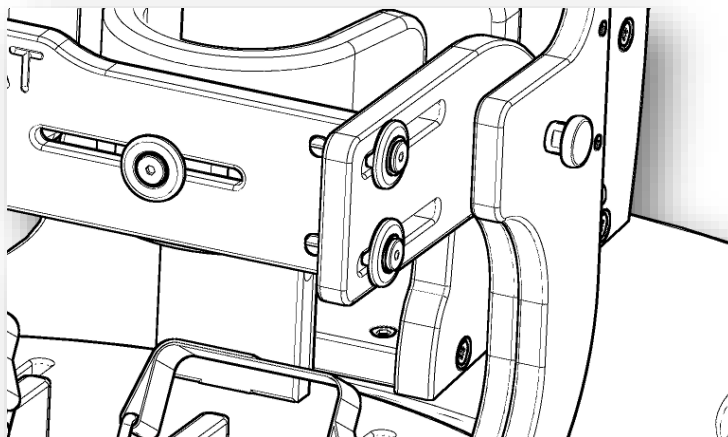




CAUTION! Barrel nuts should be inserted in a way that cut is placed towards to the chair

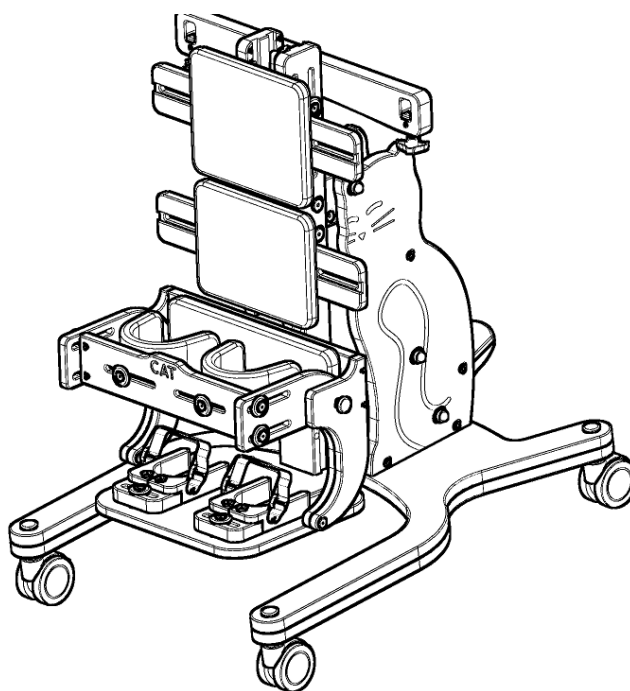
7. Screw knee pelottes with the aid of two screws (n) together with steel washers (p) and washers (o) in the left side.





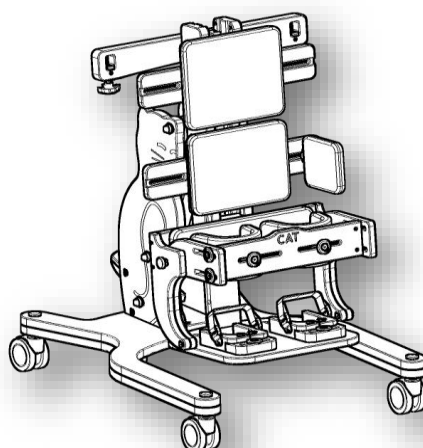
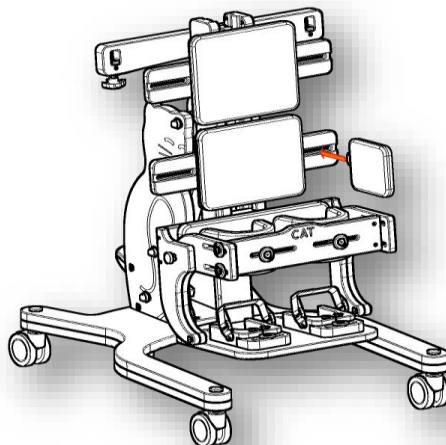
Points 6 and 7 should be repeated for right side of pelotte.

8. Picture below shows how knee pelotte should be mounted.

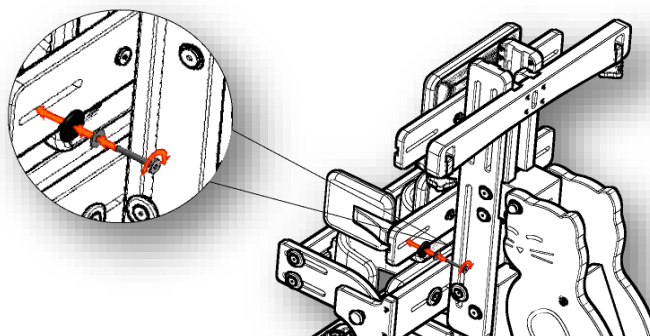


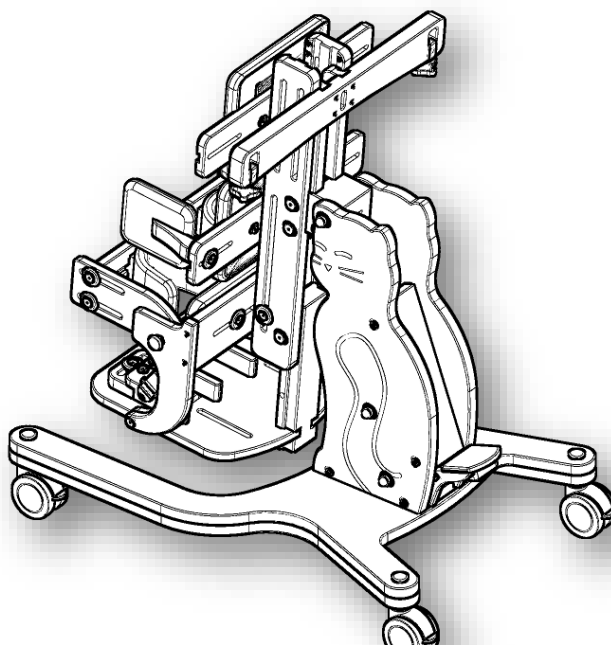
Stage VI - Assembly of side pelottes

1. Adjust first lower pelotte (j) like it is shown in the picture.



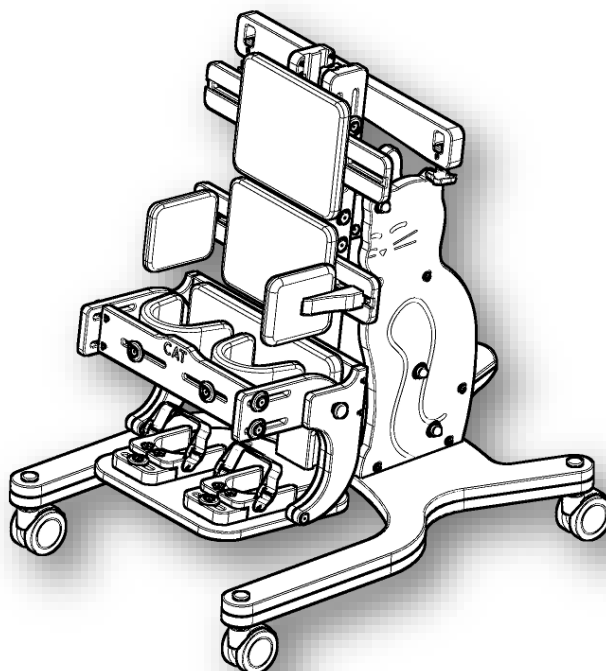
2. Screw pelotte with the aid of screw (n), washer (p) and washer (o) like it is presented in the picture.



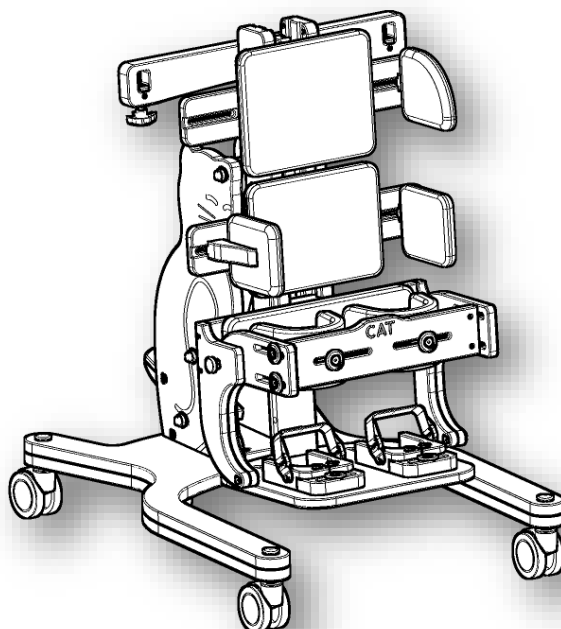
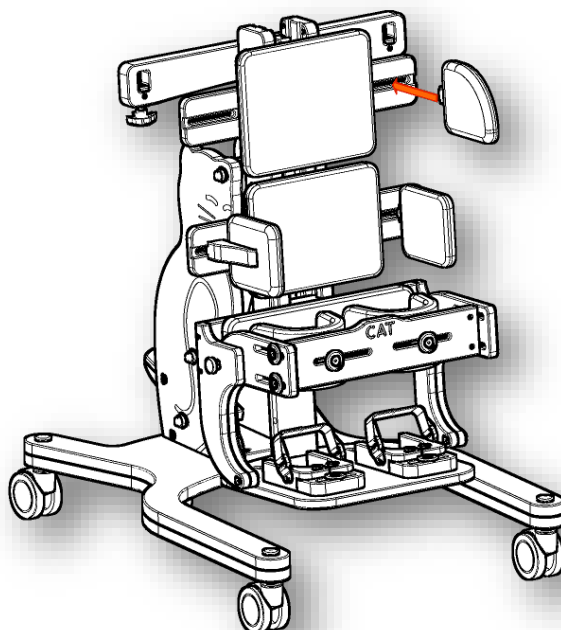


Points 1 and 2 should be repeated for second pelotte.

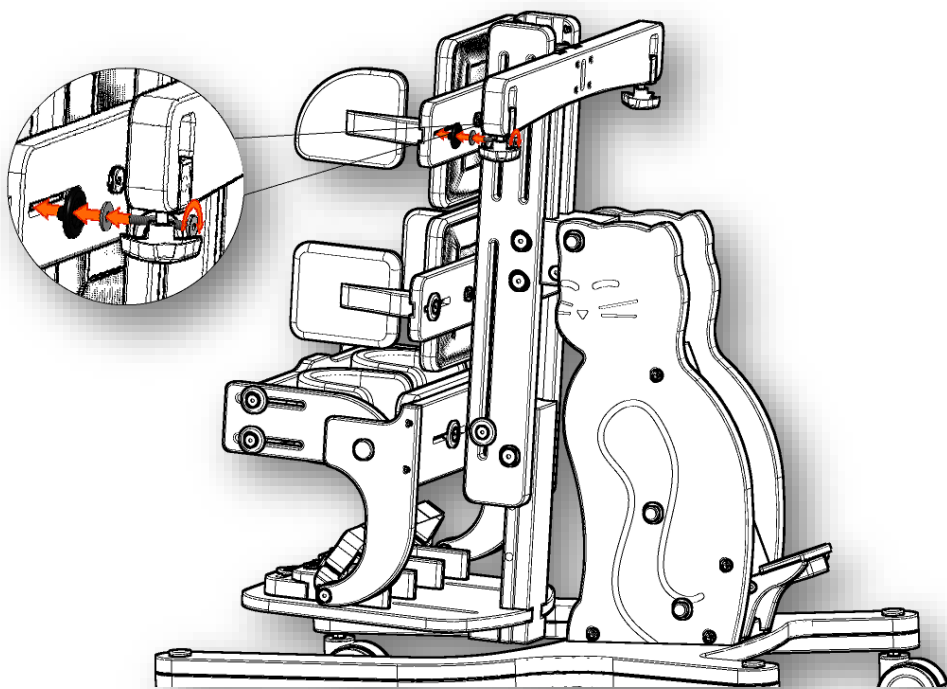
3. Picture shows how lower pelottes should be mounted.



4. Picture below shows how left upper pelotte (k) should be adjusted.

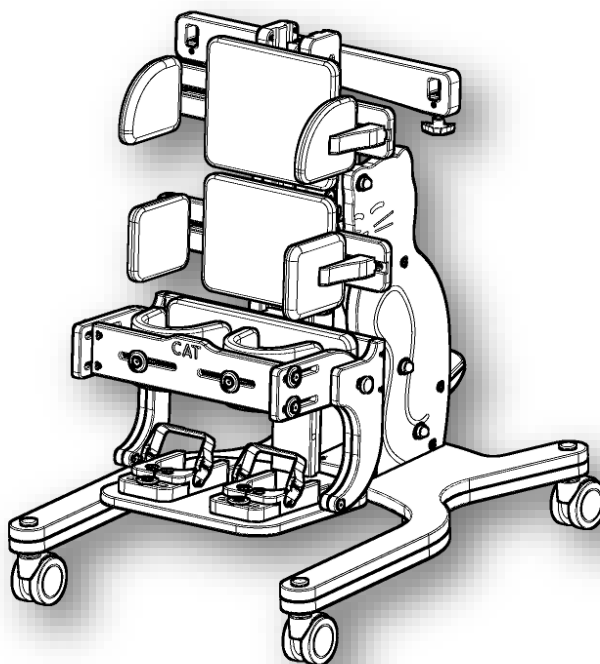


5. Screw pelottes with the aid of screw (n), washer (p) and washer (o) like it is presented in the picture



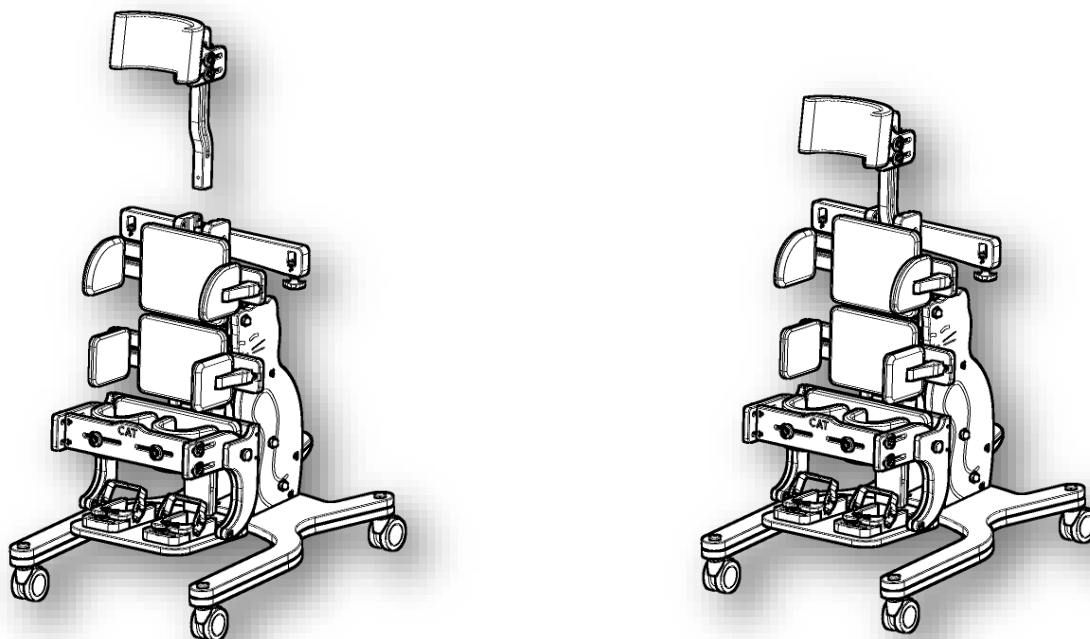
Points 4 and 5 should be repeated for right pelotte.

6. Picture below shows how upper pelottes should be mounted.

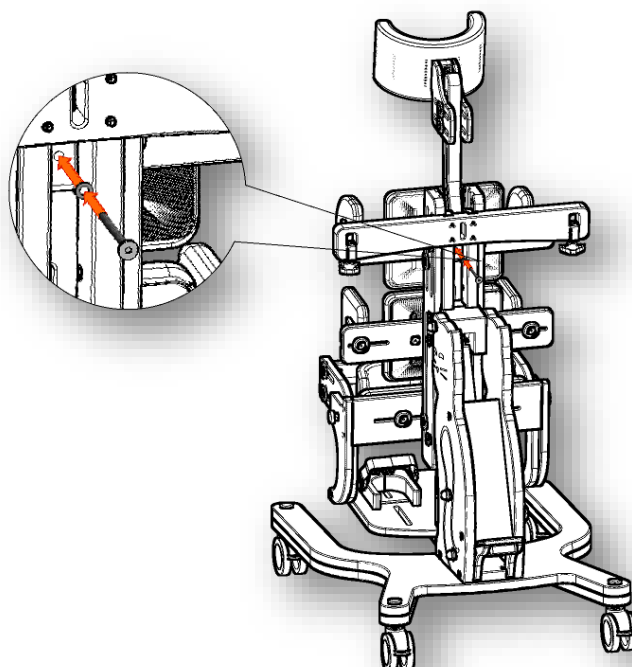


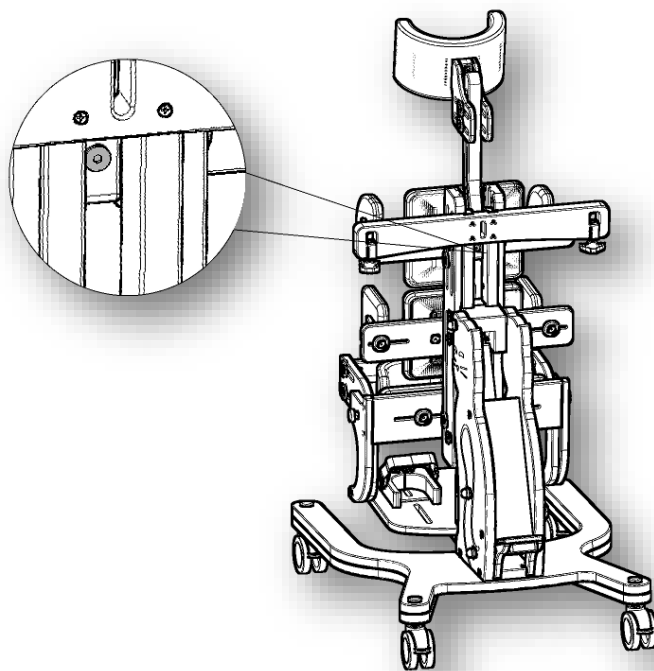
Stage VII - Assembly of headrest

1. Picture below shows how headrest (m) should be adjusted.

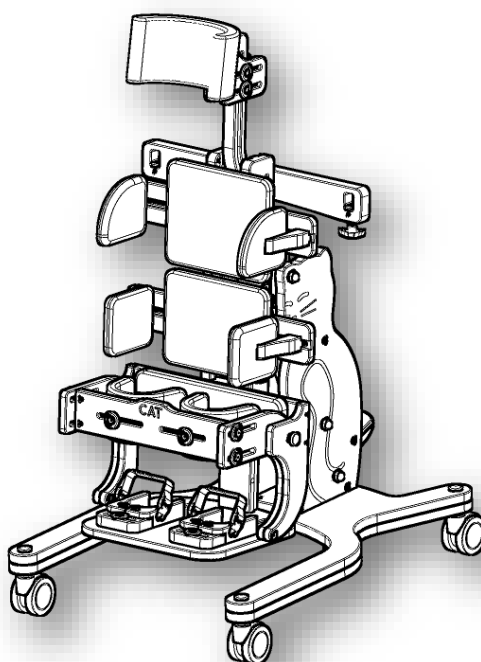


2. Screw headrest with the aid of screw (x) together with washer (w) like it is presented in the picture.



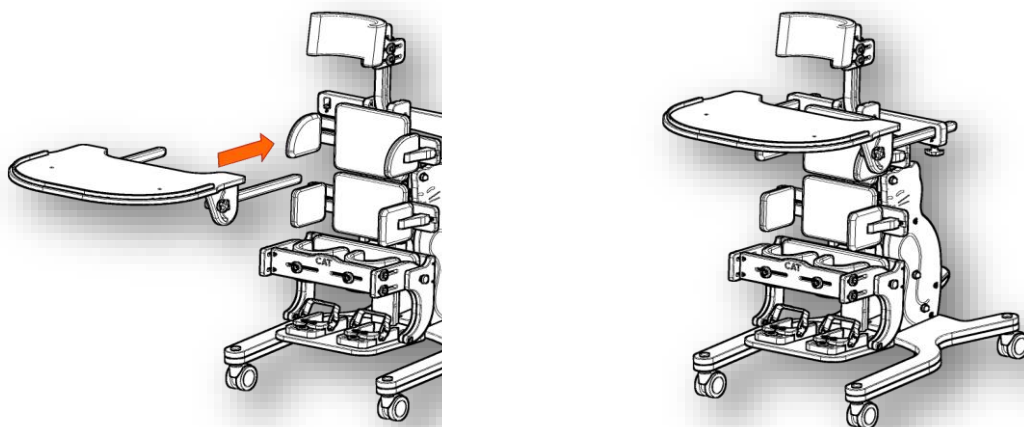


3. Picture below shows how headrest should be.

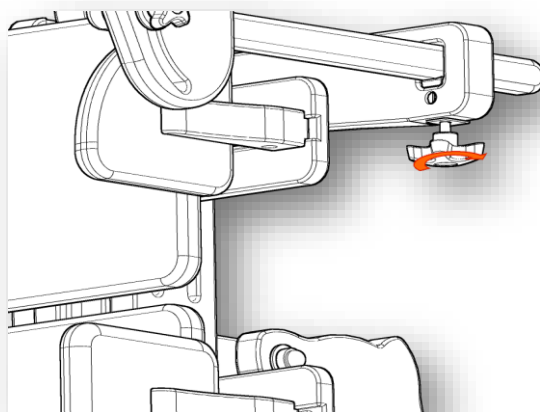


Stage VIII - Assembly of tray

1. Picture below shows how tray should be mounted.



2. Screw tray with the aid of knobs like it is presented in the picture.





MANUFACTURER OF ORTHOPEDIC DEVICES



Akces-MED. Sp. z o.o.

ul. Leszka Czarnego 3

35-615 Rzeszów

ph. (17) 864 04 70

www.akces-med.com

e-mail: akces-med@akces-med.com

Date of issue: 19.11.2014

The last update: 27.11.2014



AKCES-MED Ltd. reserve the right to introduce technical and trading changes

in the content of the instruction without warning.