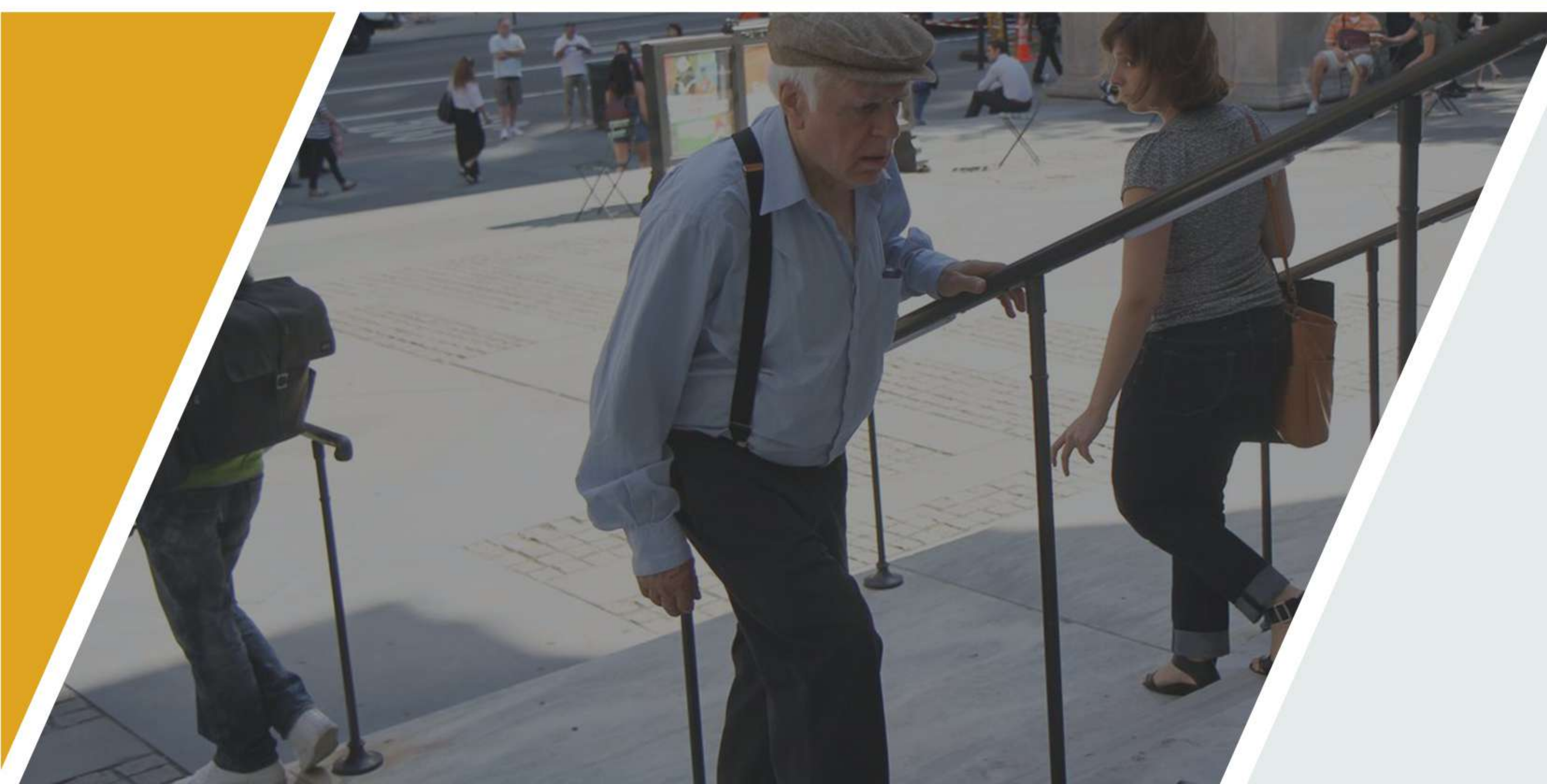


**PROMOTE THE CARE
OF THE WORLD**



Add: Chenlong Building, NO.1, Jingang Road,
Yangshe Town, Zhangjiagang City
Jiangsu Province China
Tel: +86-0512-88831198
Fax: +86-0512-58672811
E-mail: simon@dragon-iec.com
<http://www.dragon-iec.com>



PRODUCT DESCRIPTION

MOTORIZED STAIR CHAIR

PRODUCT MODEL
DW-SW01

GRAPHICAL VIEW

1. Control Panel

Molded plastic box with smart touch.



2. Stable Aluminum Seat with Removable Cushion

Superior patient comfort,remove the cushion according the weather.

3. 5-inch Front Castor Wheels

Enables wheelchair like mobility

4. Upper Control Handle

Ergonomically positioned for optimal operator control.



5. Motorized Stair-TREAD System

Transport patient up and down stairs.

6. 5-inch Wheels

Help to walking on the ground.



MODEL	DW-SW02
Product size (L*W*H)	53*80*113cm
Folded size (L*W*H)	113*53*37cm
Packing size(L*W*H)	120*60*35cm
Load limit	200kg
N.W.	35kg
G.W.	51kg
Height adjust	113cm to 160cm with three height position adjustment
Overall depth	112cm
Overall width	48cm
Seat dimension	width_41cm * depth_48cm * height from floor_50cm
Foot rest dimension	width_38cm*depth_20cm*height from floor_18cm
Motor output power	120w
Motor output voltage	20-29.4v
Motor adaptable voltage	110-240v
Motor current	13.9A
Battery voltage	24v
Service life	3-5 years
The track angle	The track angle after back rest with any position adjustment, suitable for different floors.

TECHNICAL FEATURE



Prepare the mobility stair climber for use

Checking the battery charge

1. Either on the mobility stair climber or when it has been removed turns the black switch.

- O means off
- I means on

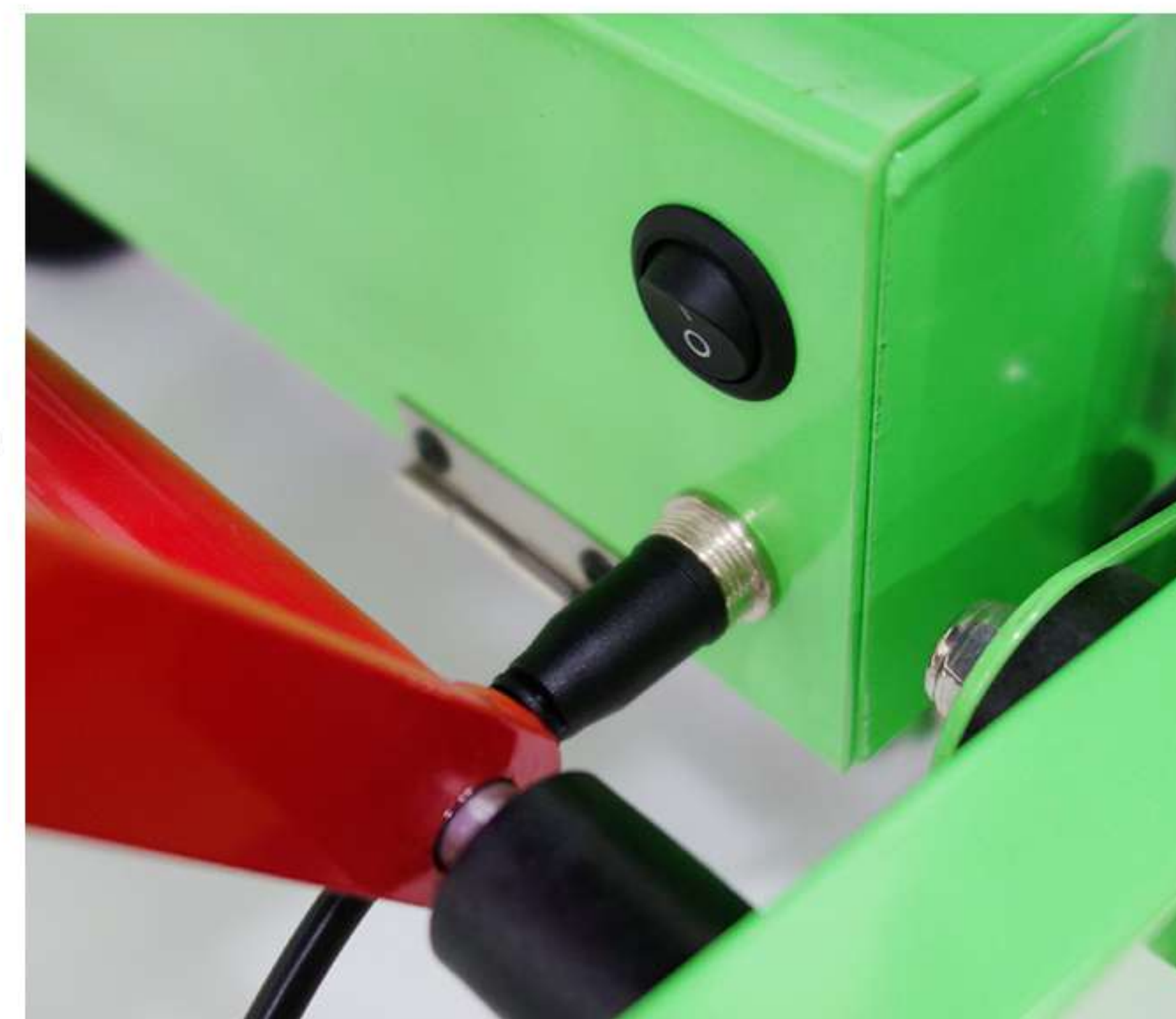


2. On the LED display control panel, there could show the quantity of electricity as 91%.



Charging the battery: on the mobility stair climber

3. Plug the charging cable into the recessed and charge the battery.
4. After the battery is charged, unplug the charging cable directly

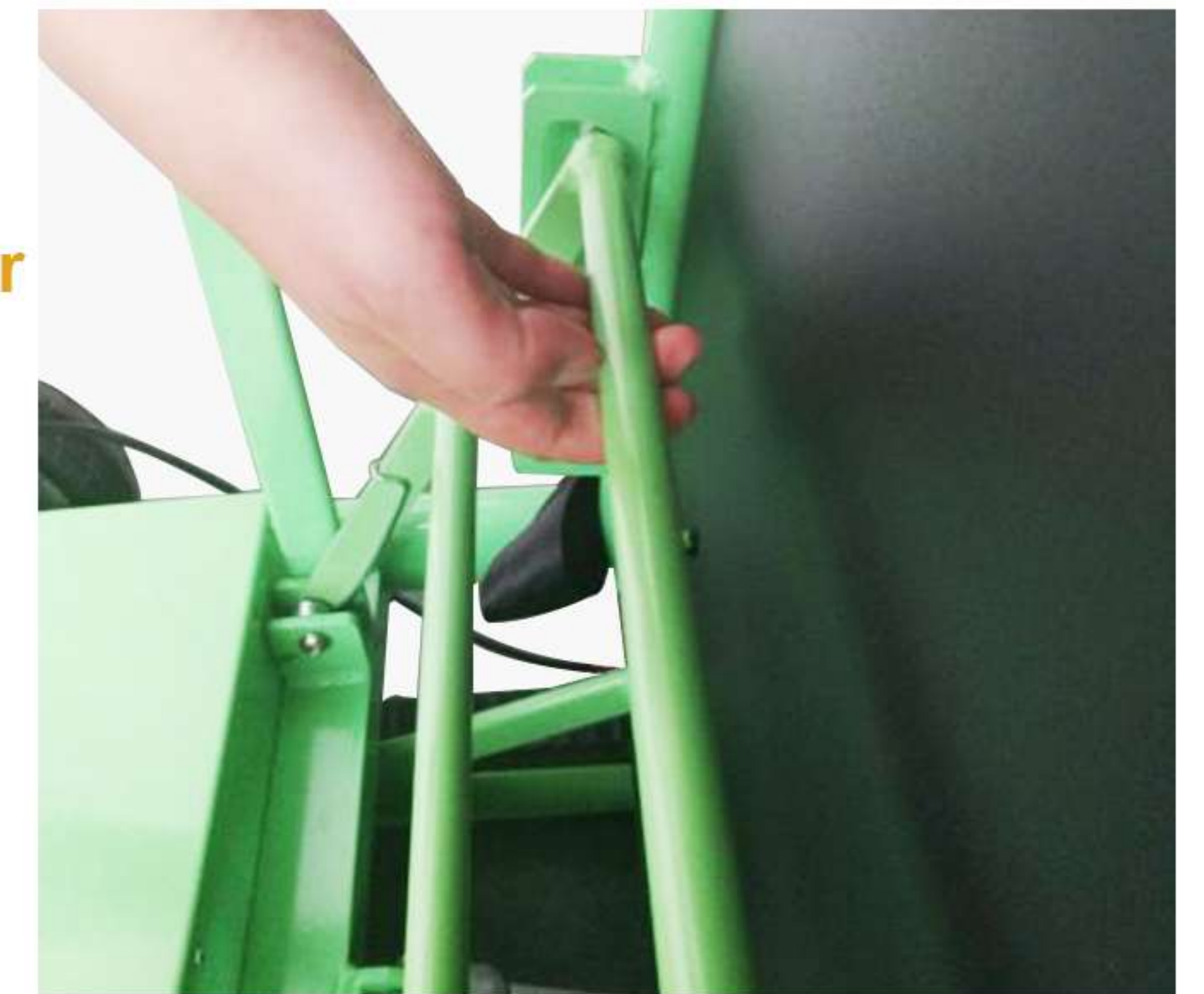


Operating the mobility stair climber

Deploying and folding the mobility stair climber

Folding mobility stair climber

5. Depress the bar lock that has the black arrow with hand.



6. Whilst the bar is depressed push the handles away from the body and the mobility stair climber will start to be folded.

7. Fasten the safety belts to make sure the mobility stair climber folded.



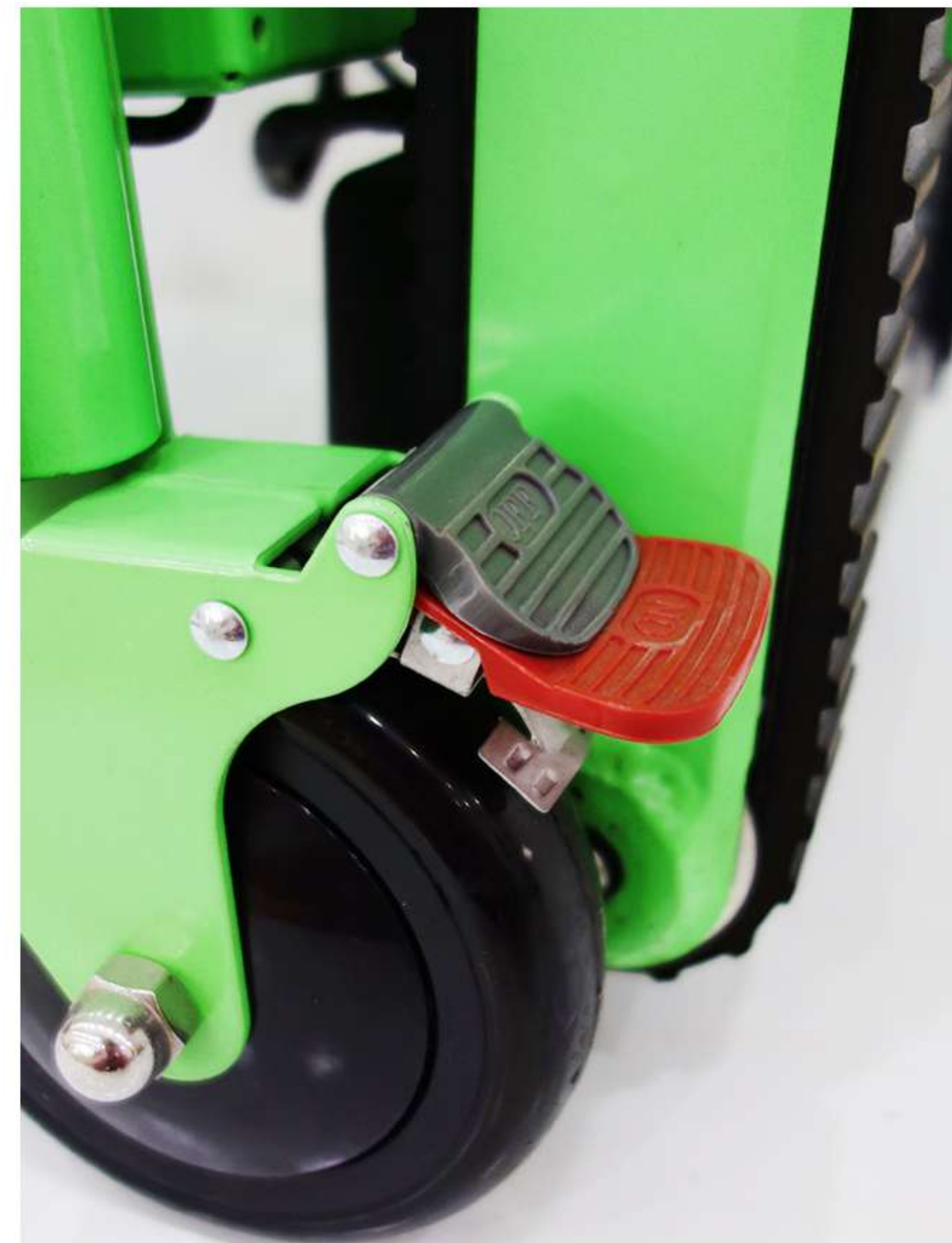
Deploying the mobility stair climber

8. Remove the mobility stair climber from its storage location and unbuckle strap while holding the stair climbing wheelchair in a folded position.
9. Pull the mobility stair climber seat down towards the floor and list for a click when the seat locks in position.



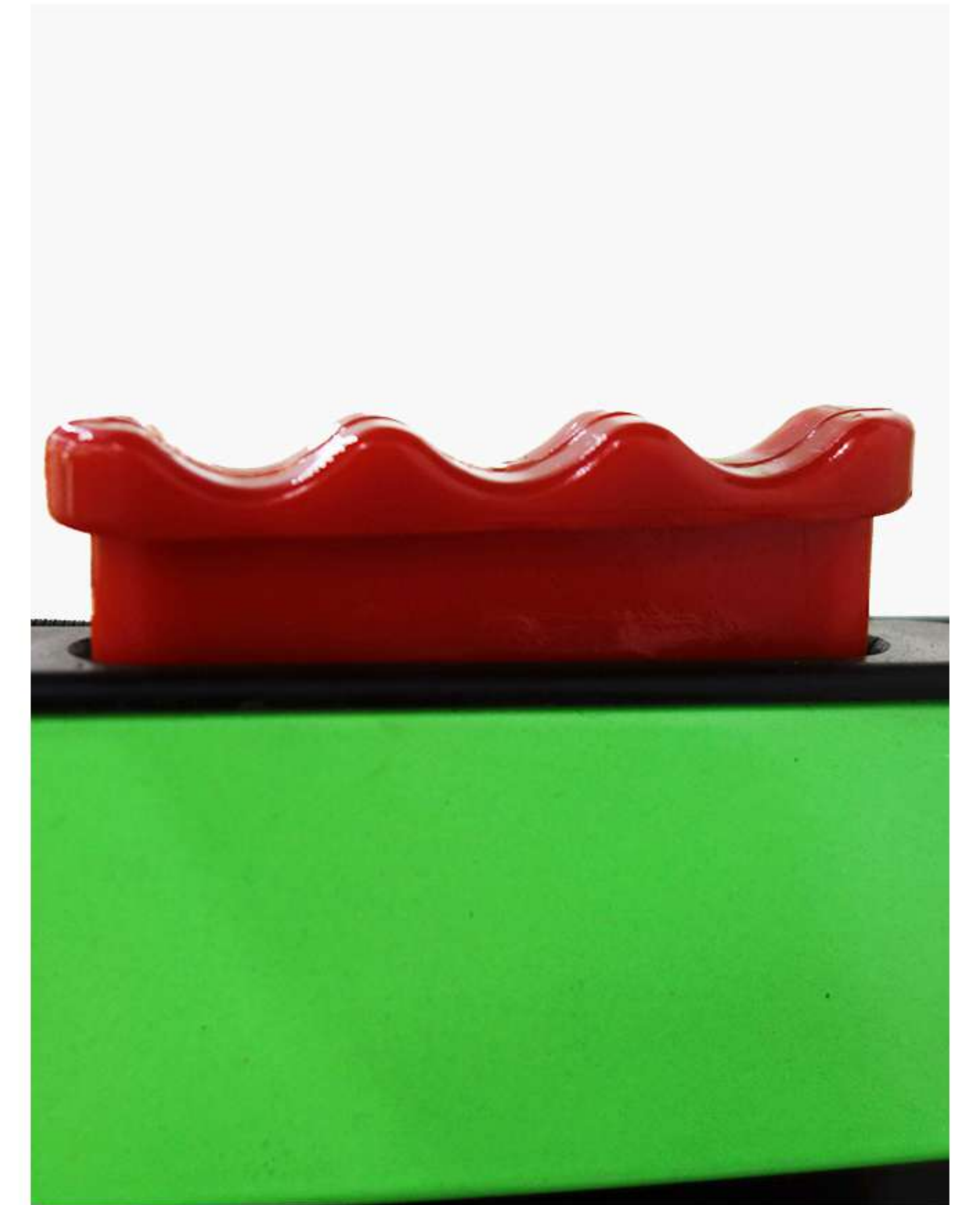
Applying the brakes

10. Depress the red flap of braking mechanism firmly with the foot to engage brake.



Extending the operating handle

12. Press down red button to make the lift handle up and down to lock in position.

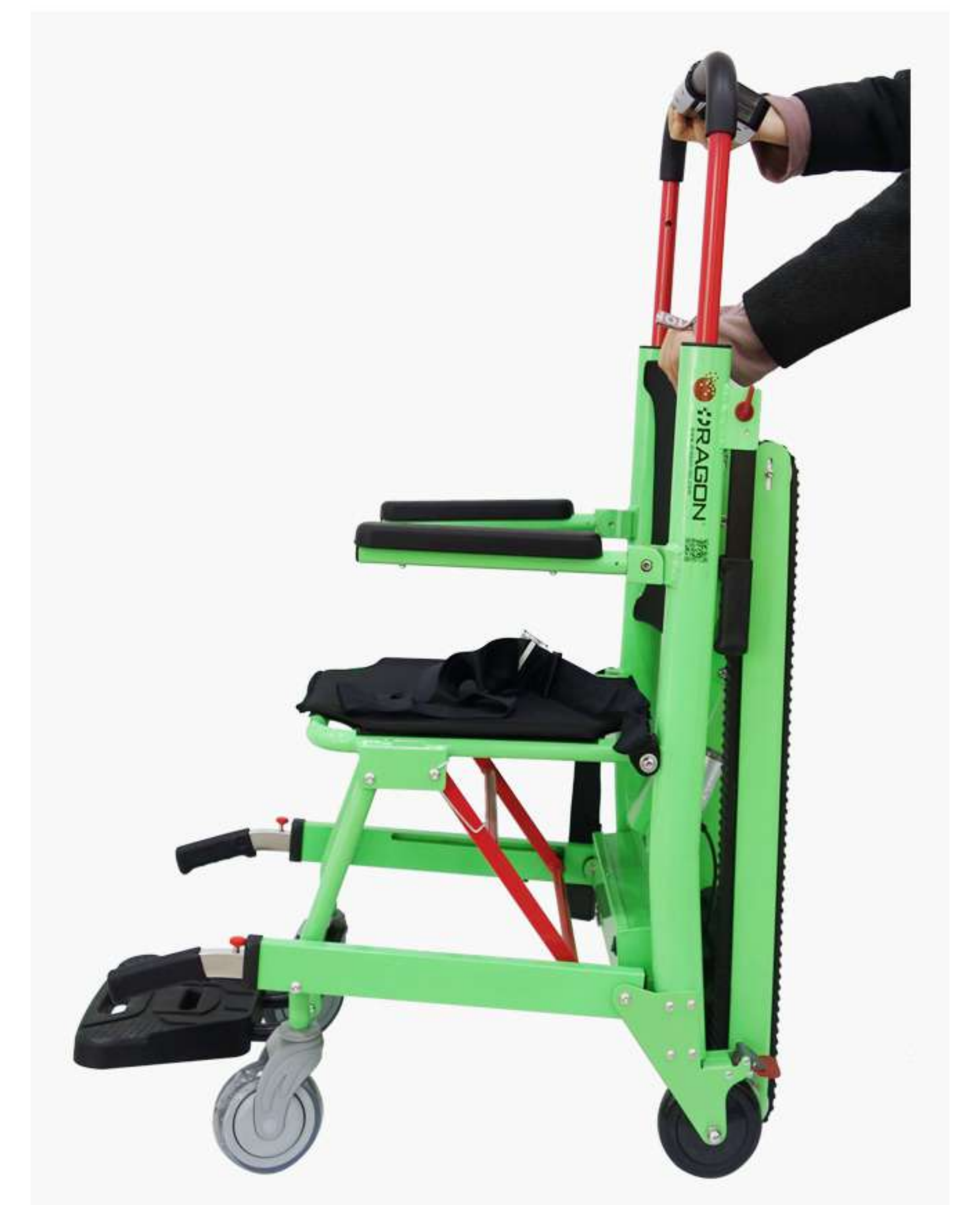


Releasing the brakes

11. Firmly press the grey tad to release the brake.



13. Depending on the height of operator there are 4 heights can be selected.

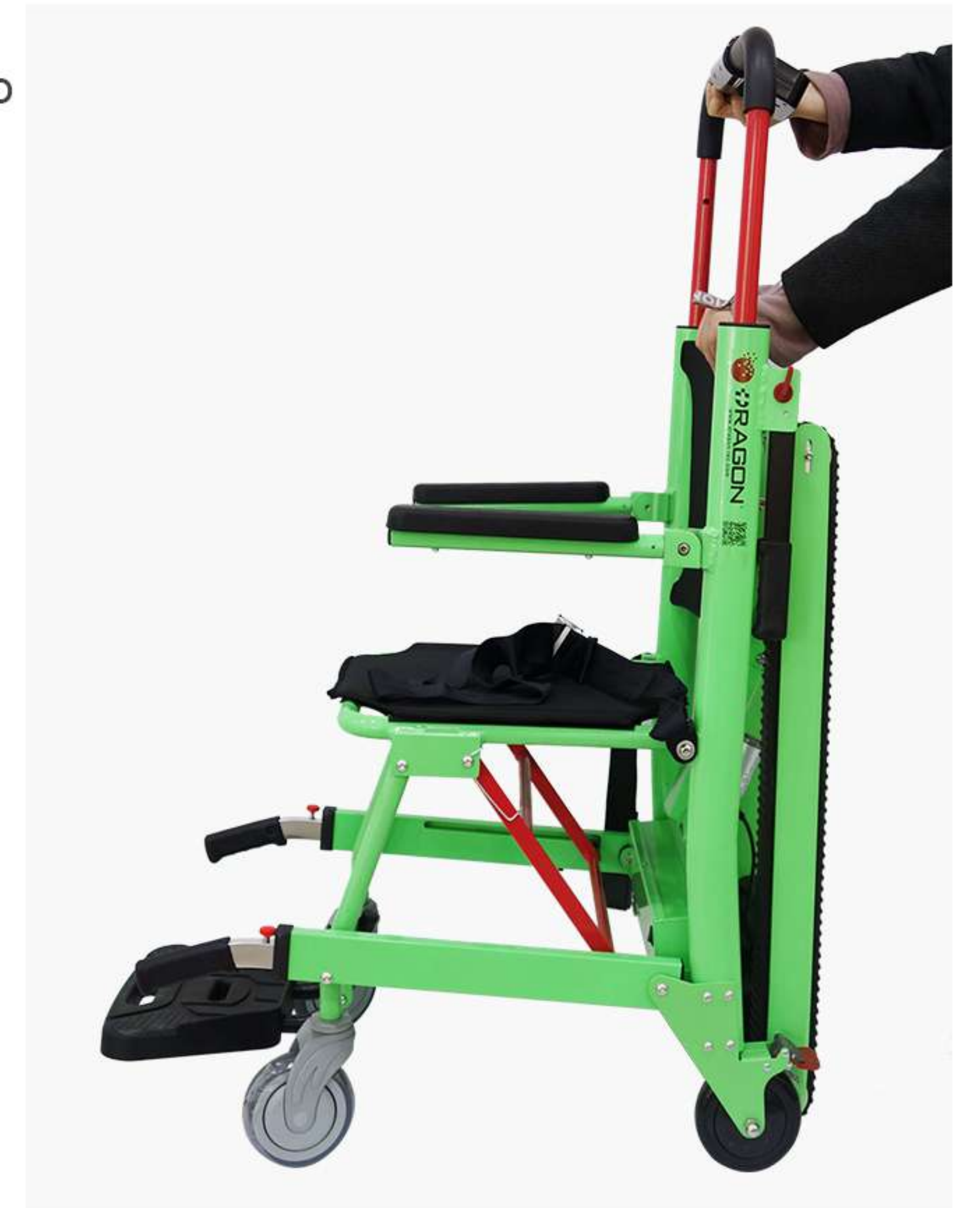


Extending the tracks

14. On the LED display control panel, it shows as the red button in square frame: track fold and track unfold.
15. It could control extending the tracks for different angles, as from 0° to 35°.



17. Press the red button, make the track stop at any angel to suitable for the stairs of different angel.



16. Micro-push rod to help control any angle of extending tracks.



- track fold: reduce the track angle with the mobility stair climber
- track unfold: extend the track angle with the mobility stair climber



18. Press the button as + or -, the speed for climbing stairs will be changed.

19. + means speed up. - means reduce the speed.

- DRAGON 1= 1.7S/Stair
- DRAGON 2= 1.3S/Stair
- DRAGON 3= 1S/Stair



Night light

21. For the red button as light, it's the night light. It could help to see the stairs on dark place.

22. When press the red light button, the light on the back of the touch screen will brighten up.



Touch screen for mobility stair climber

20. This button in red square frame is the master controller for climbing stairs.



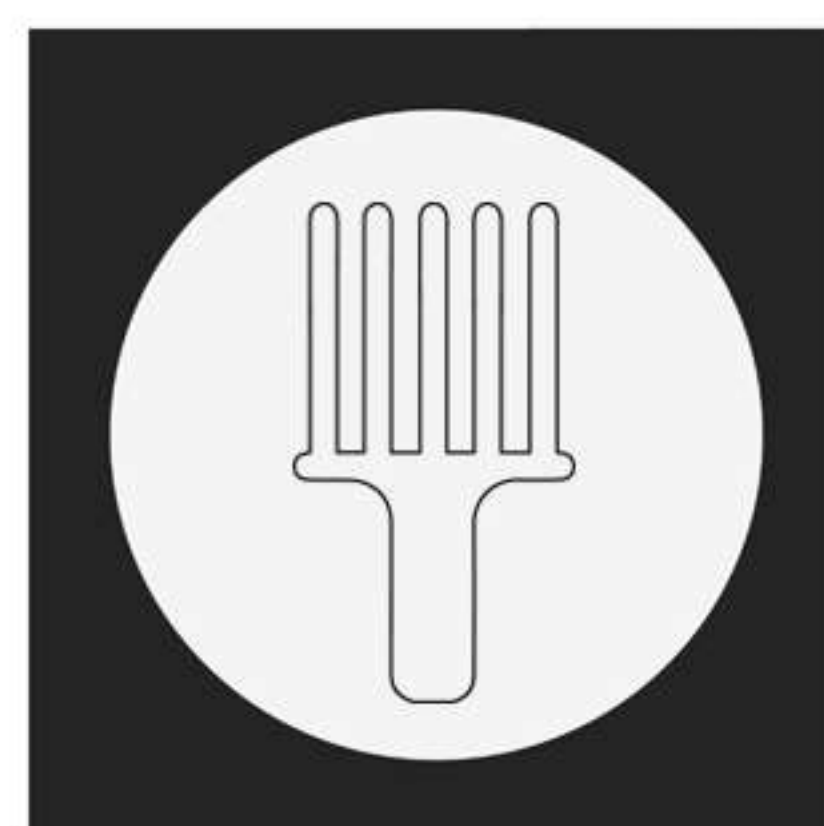
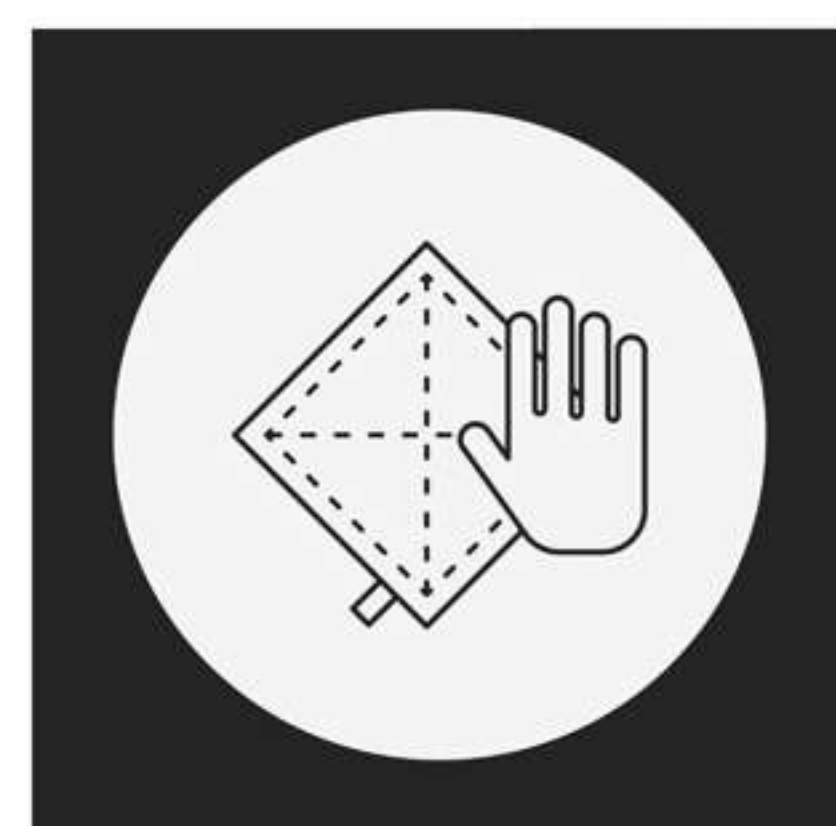
Climbing stairs control

23. The two buttons with stairs, one means up the stairs and another means down the stairs. The narrow direction will show you which to up and which to down.



CLEANING

Clean the mobility stair climber and its parts with a clean cloth or soft brush and warm soapy water. Rinse with warm water and air dry. Do not clean with products comprising of bleach or phenol. A stiff bristled brush can be used if necessary.



WARNING

1

Never leave an evacuee unattended in the mobility stair climber and always use restraints.

WARNING

2

Avoid changing the position of the rapidly, as this may result in an injury to the evacuee. Support the mobility stair climber while adjusting handles.

WARNING

3

Improper maintenance can cause injury. Maintain the mobility stair climber only for the purpose described in this manual.



COMPANY PROFILE

About us

Dragon Industry(ZJG)Co.,Ltd was established with the goal of creating the highest level of quality and service this area has ever seen. It is a leading provider of medical, healthcare products serving all segments of the healthcare market including hospitals and clinics, nursing homes and long-term care facilities, private medical practices, and more.

We specialize in:

First aid series: We have more than 100 varieties of ambulance stretcher, stair stretcher, scoop stretcher, basket stretcher, military stretcher, traction splint, emergency blanket etc.

Hospital equipment:

Hospital bed, operating table, I.V. Stand, waiting chair, examination couch, Medical trolley etc.

Our Purpose:

Reasonable price, High quality, ontime delivery, Best service

Because lives depend on it